

# ABflo® 450 Rabbit anti-Mouse CD304/Neuropilin-1 mAb

Catalog No.: A26588

## Basic Information

### Observed MW

Refer to figures

### Calculated MW

103kDa

### Category

Primary antibody

### Applications

FC

### Cross-Reactivity

Mouse

### CloneNo number

ARC69115-ABflo450

### Conjugate

ABflo® 450. Ex:406nm. Em:445nm.

## Recommended Dilutions

**FC** 5 µl per 10<sup>6</sup> cells in  
100 µl volume

## Background

Enables protein kinase binding activity; transmembrane signaling receptor activity; and vascular endothelial growth factor binding activity. Involved in several processes, including nervous system development; regulation of signal transduction; and vasculature development. Acts upstream of or within several processes, including morphogenesis of a branching epithelium; nervous system development; and toxin transport. Located in several cellular components, including endosome; focal adhesion; and neurofilament. Is integral component of postsynaptic membrane. Is expressed in several structures, including cardiovascular system; jaw; lung; nervous system; and sensory organ. Used to study retinal vein occlusion. Human ortholog(s) of this gene implicated in lung non-small cell carcinoma. Orthologous to human NRP1 (neuropilin 1).

## Immunogen Information

### Gene ID

18186

### Swiss Prot

P97333

### Immunogen

Recombinant fusion protein containing a sequence corresponding to amino acids 22-856 of mouse CD304/Neuropilin-1 (NP\_032763.2).

### Synonyms

Nrp; NP-1; Npn1; NPN-1; C530029I03

## Contact

☎ | 400-999-6126

✉ | [cn.market@abclonal.com.cn](mailto:cn.market@abclonal.com.cn)

🌐 | [www.abclonal.com.cn](http://www.abclonal.com.cn)

## Product Information

### Source

Rabbit

### Isotype

IgG

### Purification

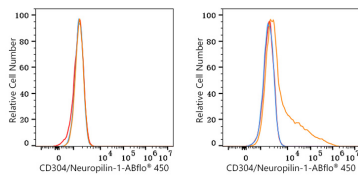
Affinity purification

### Storage

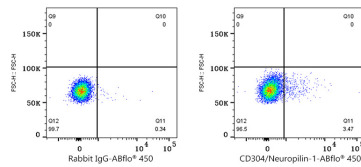
Store at 2-8°C. Avoid freeze.

Buffer: PBS with 0.09% Sodium azide, 0.2% BSA, pH7.3.

## Validation Data



Flow cytometry:  $1 \times 10^6$  CHO cells (negative control, left) and CHO (Transfection, right) cells were surface-stained with ABflo® 450 Rabbit anti-Mouse CD304/Neuropilin-1 mAb (A26588, 5  $\mu$ l/Test, orange line) or ABflo® 450 Rabbit IgG isotype control (5  $\mu$ l/Test, blue line). Non-fluorescently stained cells were used as blank control (red line).



Flow cytometry:  $1 \times 10^6$  C57BL/6 mouse splenocytes were surface-stained with ABflo® 450 Rabbit IgG isotype control (5  $\mu$ l/Test, left) or ABflo® 450 Rabbit anti-Mouse CD304/Neuropilin-1 mAb (A26588, 5  $\mu$ l/Test, right).