

PE Rabbit anti-Human Desmoglein 3/PVA mAb

Catalog No.: A26589

Basic Information

Observed MW

Calculated MW

108kDa

Category

Primary antibody

Applications

FC

Cross-Reactivity

Human

CloneNo number

ARC69331-PE

Conjugate

PE. Ex:565nm. Em:574nm.

Background

This gene encodes a member of the desmoglein family and cadherin cell adhesion molecule superfamily of proteins. Desmogleins are calcium-binding transmembrane glycoprotein components of desmosomes, cell-cell junctions between epithelial, myocardial, and other cell types. The encoded preproprotein is proteolytically processed to generate the mature glycoprotein. This gene is present in a gene cluster with other desmoglein gene family members on chromosome 18. The encoded protein has been identified as the autoantigen of the autoimmune blistering disease pemphigus vulgaris.

Recommended Dilutions

FC 5 μ l per 10^6 cells in
100 μ l volume

Immunogen Information

Gene ID

1830

Swiss Prot

P32926

Immunogen

Recombinant fusion protein containing a sequence corresponding to amino acids 50-615 of human Desmoglein 3/PVA (NP_001935.2).

Synonyms

PVA; ABOLM; CDHF6

Contact

☎ | 400-999-6126

✉ | cn.market@abclonal.com.cn

🌐 | www.abclonal.com.cn

Product Information

Source

Rabbit

Isotype

IgG

Purification

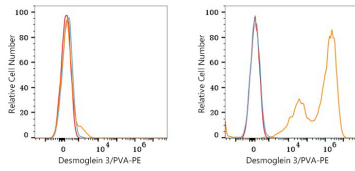
Affinity purification

Storage

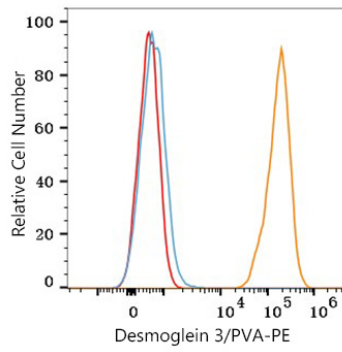
Store at 2-8°C. Avoid freeze.

Buffer: PBS with 0.09% Sodium azide, 0.2% BSA, pH7.3.

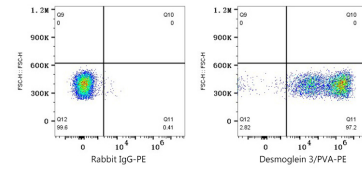
Validation Data



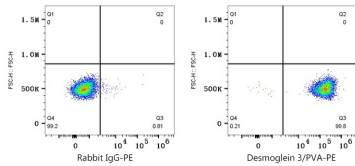
Flow cytometry: 1×10^6 293T cells (negative control, left) and 293T (Transfection, right) cells were surface-stained with PE Rabbit anti-Human Desmoglein 3/PVA mAb (A26589,5 $\mu\text{l}/\text{Test}$, orange line) or PE Rabbit IgG isotype control (A24172,5 $\mu\text{l}/\text{Test}$, blue line). Non-fluorescently stained cells were used as blank control (red line).



Flow cytometry: 1×10^6 A-431 cells were surface-stained with PE Rabbit anti-Human Desmoglein 3/PVA mAb (A26589,5 $\mu\text{l}/\text{Test}$, orange line) or PE Rabbit IgG isotype control (A24172,5 $\mu\text{l}/\text{Test}$, blue line). Non-fluorescently stained cells were used as blank control (red line).



Flow cytometry: 1×10^6 293T (Transfection) cells were surface-stained with PE Rabbit IgG isotype control (A24172,5 $\mu\text{l}/\text{Test}$, left) or PE Rabbit anti-Human Desmoglein 3/PVA mAb (A26589,5 $\mu\text{l}/\text{Test}$, right).



Flow cytometry: 1×10^6 A-431 cells were surface-stained with PE Rabbit IgG isotype control (A24172,5 $\mu\text{l}/\text{Test}$, left) or PE Rabbit anti-Human Desmoglein 3/PVA mAb (A26589,5 $\mu\text{l}/\text{Test}$, right).