

ABflo® 488 Rabbit anti-Human Desmoglein 3/PVA mAb

Catalog No.: A26590

Basic Information

Observed MW

Calculated MW

108kDa

Category

Primary antibody

Applications

FC

Cross-Reactivity

Human

CloneNo number

ARC69331-ABflo488

Conjugate

ABflo® 488. Ex:491nm. Em:516nm.

Recommended Dilutions

FC 5 µl per 10⁶ cells in
100 µl volume

Background

This gene encodes a member of the desmoglein family and cadherin cell adhesion molecule superfamily of proteins. Desmogleins are calcium-binding transmembrane glycoprotein components of desmosomes, cell-cell junctions between epithelial, myocardial, and other cell types. The encoded preproprotein is proteolytically processed to generate the mature glycoprotein. This gene is present in a gene cluster with other desmoglein gene family members on chromosome 18. The encoded protein has been identified as the autoantigen of the autoimmune blistering disease pemphigus vulgaris.

Immunogen Information

Gene ID

1830

Swiss Prot

P32926

Immunogen

Recombinant fusion protein containing a sequence corresponding to amino acids 50-615 of human Desmoglein 3/PVA (NP_001935.2).

Synonyms

PVA; ABOLM; CDHF6

Contact

 | 400-999-6126

 | cn.market@abclonal.com.cn

 | www.abclonal.com.cn

Product Information

Source

Rabbit

Isotype

IgG

Purification

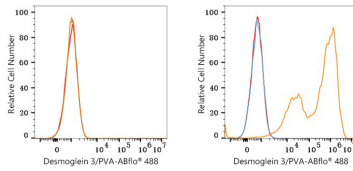
Affinity purification

Storage

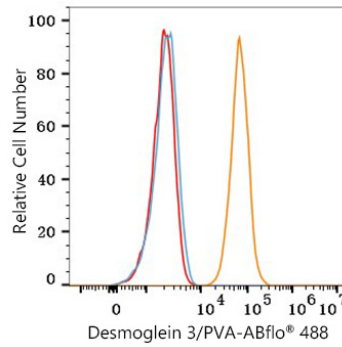
Store at 2-8°C. Avoid freeze.

Buffer: PBS with 0.09% Sodium azide, 0.2% BSA, pH7.3.

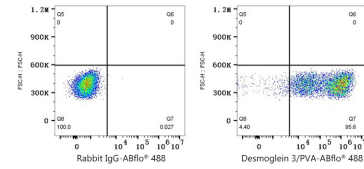
Validation Data



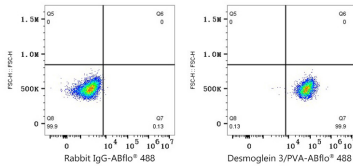
Flow cytometry: 1×10^6 293T cells (negative control, left) and 293T (Transfection, right) cells were surface-stained with ABflo® 488 Rabbit anti-Human Desmoglein 3/PVA mAb (A26590,5 μ l/Test, orange line) or ABflo® 488 Rabbit IgG isotype control (A22069,5 μ l/Test, blue line). Non-fluorescently stained cells were used as blank control (red line).



Flow cytometry: 1×10^6 A-431 cells were surface-stained with ABflo® 488 Rabbit anti-Human Desmoglein 3/PVA mAb (A26590,5 μ l/Test, orange line) or ABflo® 488 Rabbit IgG isotype control (A22069,5 μ l/Test, blue line). Non-fluorescently stained cells were used as blank control (red line).



Flow cytometry: 1×10^6 293T (Transfection) cells were surface-stained with ABflo® 488 Rabbit IgG isotype control (A22069,5 μ l/Test, left) or ABflo® 488 Rabbit anti-Human Desmoglein 3/PVA mAb (A26590,5 μ l/Test, right).



Flow cytometry: 1×10^6 A-431 cells were surface-stained with ABflo® 488 Rabbit IgG isotype control (A22069,5 μ l/Test, left) or ABflo® 488 Rabbit anti-Human Desmoglein 3/PVA mAb (A26590,5 μ l/Test, right).