

PE Rabbit anti-Human TLR3 mAb

Catalog No.: A26593

Basic Information

Observed MW

Refer to figures

Calculated MW

104kDa

Category

Primary antibody

Applications

FC (intra)

Cross-Reactivity

Human

CloneNo number

ARC69609-PE

Conjugate

PE. Ex:565nm. Em:574nm.

Recommended Dilutions

FC (intra) 5 μ l per 10^6 cells in
100 μ l volume

Background

The protein encoded by this gene is a member of the Toll-like receptor (TLR) family which plays a fundamental role in pathogen recognition and activation of innate immunity. TLRs are highly conserved from Drosophila to humans and share structural and functional similarities. They recognize pathogen-associated molecular patterns (PAMPs) that are expressed on infectious agents, and mediate the production of cytokines necessary for the development of effective immunity. The various TLRs exhibit different patterns of expression. This receptor is most abundantly expressed in placenta and pancreas, and is restricted to the dendritic subpopulation of the leukocytes. It recognizes dsRNA associated with viral infection, and induces the activation of NF-kappaB and the production of type I interferons. It thus plays a role in host defense against multiple viruses.

Immunogen Information

Gene ID

7098

Swiss Prot

O15455

Immunogen

Recombinant Protein corresponding to a sequence within amino acids 24-339 of human TLR3 (NP_003256.1).

Synonyms

CD283; IIAE2; IMD83

Contact

☎ | 400-999-6126

✉ | cn.market@abclonal.com.cn

🌐 | www.abclonal.com.cn

Product Information

Source

Rabbit

Isotype

IgG

Purification

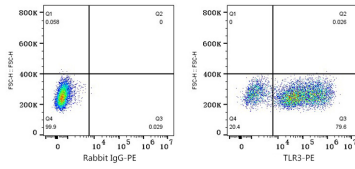
Affinity purification

Storage

Store at 2-8°C. Avoid freeze.

Buffer: PBS with 0.09% Sodium azide, 0.2% BSA, pH7.3.

Validation Data



Flow cytometry: 1X10⁶ 293T (Transfection) cells were intracellularly-stained with PE Rabbit IgG isotype control (A24172,5 µl/Test,left) or PE Rabbit anti-Human TLR3 mAb (A26593,5 µl/Test,right).