

PE Rabbit anti-Human/Mouse PDGFR α /CD140a mAb

Catalog No.: A26602

Basic Information

Observed MW

Calculated MW

123kDa

Category

Primary antibody

Applications

FC

Cross-Reactivity

Human

CloneNo number

ARC56217-PE

Conjugate

PE. Ex:565nm. Em:574nm.

Recommended Dilutions

FC 5 μ l per 10^6 cells in
100 μ l volume

Background

This gene encodes a cell surface tyrosine kinase receptor for members of the platelet-derived growth factor family. These growth factors are mitogens for cells of mesenchymal origin. The identity of the growth factor bound to a receptor monomer determines whether the functional receptor is a homodimer or a heterodimer, composed of both platelet-derived growth factor receptor alpha and beta polypeptides. Studies suggest that this gene plays a role in organ development, wound healing, and tumor progression. Mutations in this gene have been associated with idiopathic hypereosinophilic syndrome, somatic and familial gastrointestinal stromal tumors, and a variety of other cancers.

Immunogen Information

Gene ID

5156

Swiss Prot

P16234

Immunogen

Recombinant fusion protein containing a sequence corresponding to amino acids 24-524 of human PDGFR α /CD140a (NP_006197.1).

Synonyms

CD140A; PDGFR2; PDGFR-2

Contact

☎ | 400-999-6126

✉ | cn.market@abclonal.com.cn

🌐 | www.abclonal.com.cn

Product Information

Source

Rabbit

Isotype

IgG

Purification

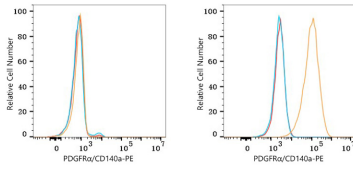
Affinity purification

Storage

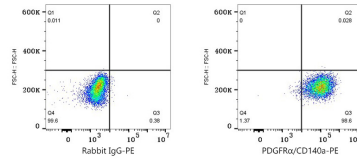
Store at 2-8°C. Avoid freeze.

Buffer: PBS with 0.09% Sodium azide, 0.2% BSA, pH7.3.

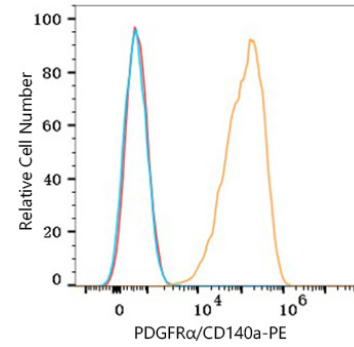
Validation Data



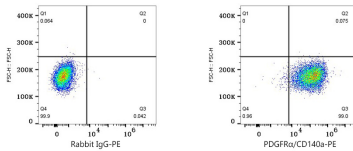
Flow cytometry: 1×10^6 HeLa cells (negative control, left) and U-138MG cells (right) were surface-stained with PE Rabbit anti-Human/Mouse PDGFR α /CD140a mAb (A26602, 5 μ l/Test, orange line) or PE Rabbit IgG isotype control (A24172, 5 μ l/Test, blue line). Non-fluorescently stained cells were used as blank control (red line).



Flow cytometry: 1×10^6 U-138MG cells were surface-stained with PE Rabbit IgG isotype control (A24172, 5 μ l/Test, left) or PE Rabbit anti-Human/Mouse PDGFR α /CD140a mAb (A26602, 5 μ l/Test, right).



Flow cytometry: 1×10^6 HeLa cells (negative control, left) and NIH/3T3 cells (right) were surface-stained with PE Rabbit anti-Human/Mouse PDGFR α /CD140a mAb (A26602, 5 μ l/Test, orange line) or PE Rabbit IgG isotype control (A24172, 5 μ l/Test, blue line). Non-fluorescently stained cells were used as blank control (red line).



Flow cytometry: 1×10^6 NIH/3T3 cells were surface-stained with PE Rabbit IgG isotype control (A24172, 5 μ l/Test, left) or PE Rabbit anti-Human/Mouse PDGFR α /CD140a mAb (A26602, 5 μ l/Test, right).