

PE Rabbit anti-Human CD101/IGSF2 mAb

Catalog No.: A26607

Basic Information

Observed MW

Calculated MW

115kDa

Category

Primary antibody

Applications

FC

Cross-Reactivity

Human

CloneNo number

ARC62615-PE

Conjugate

PE. Ex:565nm. Em:574nm.

Background

Predicted to enable hydrolase activity, acting on carbon-nitrogen (but not peptide) bonds, in cyclic amides. Predicted to be involved in cell surface receptor signaling pathway. Predicted to act upstream of or within positive regulation of myeloid leukocyte differentiation. Located in extracellular exosome.

Recommended Dilutions

FC 5 μ l per 10^6 cells in
100 μ l volume

Immunogen Information

Gene ID

9398

Swiss Prot

Q93033

Immunogen

Recombinant fusion protein containing a sequence corresponding to amino acids 21-410 of human CD101/IGSF2 (NP_004249.2).

Synonyms

V7; IGSF2; EWI-101

Contact

☎ | 400-999-6126

✉ | cn.market@abclonal.com.cn

🌐 | www.abclonal.com.cn

Product Information

Source

Rabbit

Isotype

IgG

Purification

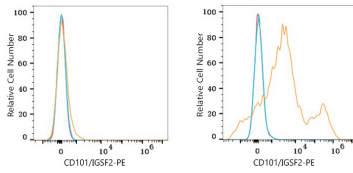
Affinity purification

Storage

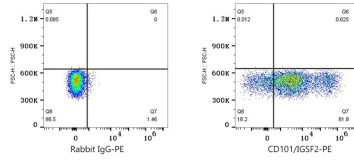
Store at 2-8°C. Avoid freeze.

Buffer: PBS with 0.09% Sodium azide, 0.2% BSA, pH7.3.

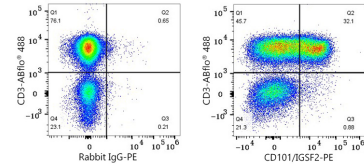
Validation Data



Flow cytometry: 1×10^6 293F cells (negative control, left) and 293F (Transfection, right) cells were surface-stained with PE Rabbit anti-Human CD101/IGSF2 mAb (A26607, 5 μ l/Test, orange line) or PE Rabbit IgG isotype control (A24172, 5 μ l/Test, blue line). Non-fluorescently stained cells were used as blank control (red line).



Flow cytometry: 1×10^6 293F (Transfection) cells were surface-stained with PE Rabbit IgG isotype control (A24172, 5 μ l/Test, left) or PE Rabbit anti-Human CD101/IGSF2 mAb (A26607, 5 μ l/Test, right).



Flow cytometry: 1×10^6 Human PBMC were surface-stained with ABflo® 488 Mouse anti-Human CD3 mAb (A25188, 5 μ l/Test) and PE Rabbit IgG isotype control (A24172, 5 μ l/Test, left) or PE Rabbit anti-Human CD101/IGSF2 mAb (A26607, 5 μ l/Test, right). Cells in the lymphocytes gate were used for analysis.