

Cytokeratin AE1 Rabbit pAb

Catalog No.: A26614

Basic Information

Observed MW

41kDa

Calculated MW

59kDa/52kDa/49kDa/51kDa/44kDa

Category

Primary antibody

Applications

WB,IHC-P,ELISA

Cross-Reactivity

Human, Mouse, Rat

Background

This gene encodes a member of the type I (acidic) cytokeratin family, which belongs to the superfamily of intermediate filament (IF) proteins. Keratins are heteropolymeric structural proteins which form the intermediate filament. These filaments, along with actin microfilaments and microtubules, compose the cytoskeleton of epithelial cells. Mutations in this gene are associated with epidermolytic hyperkeratosis. This gene is located within a cluster of keratin family members on chromosome 17q21.

Recommended Dilutions

WB 1:500 - 1:1000

IHC-P 1:100 - 1:400

ELISA Recommended starting concentration is 1 µg/mL. Please optimize the concentration based on your specific assay requirements.

Immunogen Information

Gene ID

3858/3861/3866/3868/3880

Swiss Prot

P13645/P02533/P19012/P08779/P08727

Immunogen

A synthetic peptide corresponding to a sequence within amino acids 101-200 of human Cytokeratin AE1 (NP_000412.4).

Synonyms

BIE; EHK; IHL; K10; KPP; BCIE; CK10

Contact

☎ | 400-999-6126

✉ | cn.market@abclonal.com.cn

🌐 | www.abclonal.com.cn

Product Information

Source

Rabbit

Isotype

IgG

Purification

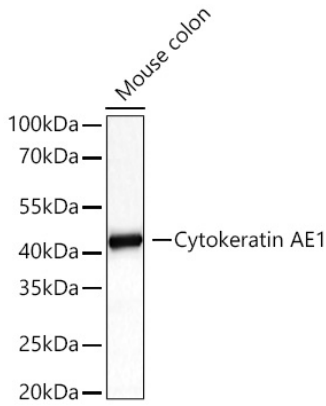
Affinity purification

Storage

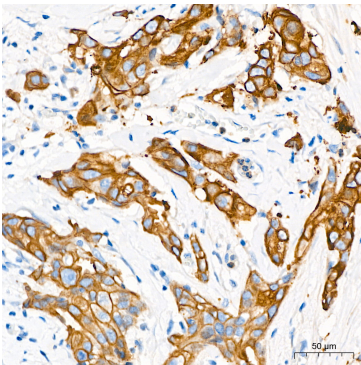
Store at -20°C. Avoid freeze / thaw cycles.

Buffer: PBS with 0.09% Sodium azide,50% glycerol,pH7.3.

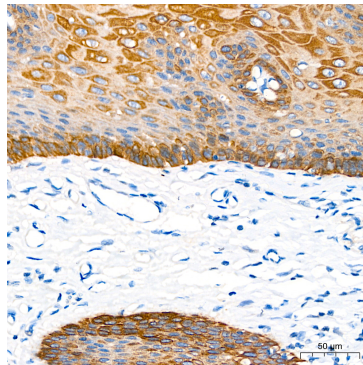
Validation Data



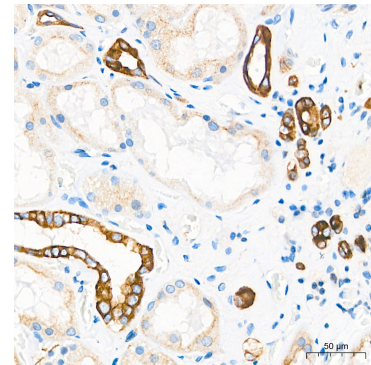
Western blot analysis of lysates from Mouse colon using Cytokeratin AE1 Rabbit pAb (A26614) at 1:1000 dilution incubated overnight at 4°C.
 Secondary antibody: HRP-conjugated Goat anti-Rabbit IgG (H+L) (AS014) at 1:10000 dilution.
 Lysates/proteins: 25 µg per lane.
 Blocking buffer: 3% nonfat dry milk in TBST.
 Detection: ECL Basic Kit (RM00020).
 Exposure time: 60s.



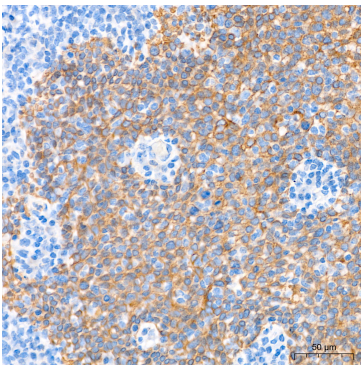
Immunohistochemistry analysis of paraffin-embedded human breast cancer tissue using Cytokeratin AE1 Rabbit pAb (A26614) at a dilution of 1:100 (40x lens). High pressure antigen retrieval performed with 0.01M Citrate Buffer(pH 6.0) prior to IHC staining.



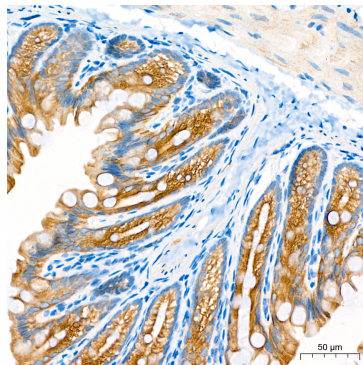
Immunohistochemistry analysis of paraffin-embedded human esophagus tissue using Cytokeratin AE1 Rabbit pAb (A26614) at a dilution of 1:100 (40x lens). High pressure antigen retrieval performed with 0.01M Citrate Buffer(pH 6.0) prior to IHC staining.



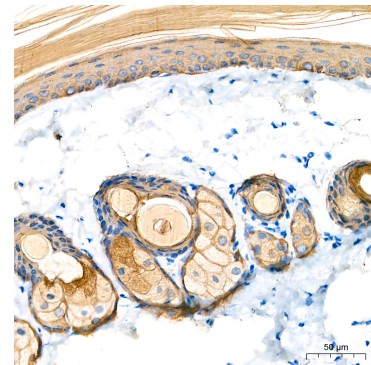
Immunohistochemistry analysis of paraffin-embedded human kidney tissue using Cytokeratin AE1 Rabbit pAb (A26614) at a dilution of 1:100 (40x lens). High pressure antigen retrieval performed with 0.01M Citrate Buffer(pH 6.0) prior to IHC staining.



Immunohistochemistry analysis of paraffin-embedded human tonsil tissue using Cytokeratin AE1 Rabbit pAb (A26614) at a dilution of 1:100 (40x lens). High pressure antigen retrieval performed with 0.01M Citrate Buffer(pH 6.0) prior to IHC staining.

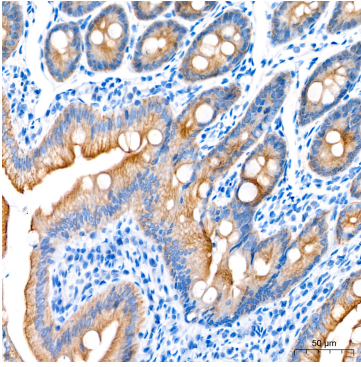


Immunohistochemistry analysis of paraffin-embedded mouse colon tissue using Cytokeratin AE1 Rabbit pAb (A26614) at a dilution of 1:100 (40x lens). High pressure antigen retrieval performed with 0.01M Citrate Buffer(pH 6.0) prior to IHC staining.

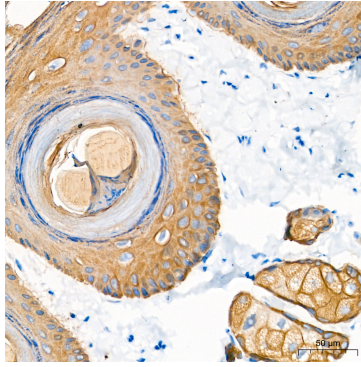


Immunohistochemistry analysis of paraffin-embedded mouse skin tissue using Cytokeratin AE1 Rabbit pAb (A26614) at a dilution of 1:100 (40x lens). High pressure antigen retrieval performed with 0.01M Citrate Buffer(pH 6.0) prior to IHC staining.

Validation Data



Immunohistochemistry analysis of paraffin-embedded rat colon tissue using Cytokeratin AE1 Rabbit pAb (A26614) at a dilution of 1:100 (40x lens). High pressure antigen retrieval performed with 0.01M Citrate Buffer(pH 6.0) prior to IHC staining.



Immunohistochemistry analysis of paraffin-embedded rat skin tissue using Cytokeratin AE1 Rabbit pAb (A26614) at a dilution of 1:100 (40x lens). High pressure antigen retrieval performed with 0.01M Citrate Buffer(pH 6.0) prior to IHC staining.