

# ICAM5 Rabbit mAb

Catalog No.: A26618 **Recombinant**

## Basic Information

### Observed MW

150kDa

### Calculated MW

97kDa

### Category

Primary antibody

### Applications

WB,IHC-P,IF/ICC,ELISA

### Cross-Reactivity

Human, Mouse, Rat

### CloneNo number

ARC69846

## Background

Predicted to enable integrin binding activity. Acts upstream of or within phagocytosis. Located in plasma membrane. Is expressed in brain. Orthologous to human ICAM5 (intercellular adhesion molecule 5).

## Recommended Dilutions

**WB** 1:50000 - 1:300000

**IHC-P** 1:1000 - 1:4000

**IF/ICC** 1:400 - 1:1600

**ELISA** Recommended starting concentration is 1 µg/mL. Please optimize the concentration based on your specific assay requirements.

## Immunogen Information

### Gene ID

15898

### Swiss Prot

Q60625

### Immunogen

Recombinant fusion protein containing a sequence corresponding to amino acids 32-227 of mouse ICAM5 (NP\_032345.2).

### Synonyms

TLN; CD50; Tlcn; Icam3; ICAM-3; ICAM-5

## Contact

☎ | 400-999-6126

✉ | [cn.market@abclonal.com.cn](mailto:cn.market@abclonal.com.cn)

🌐 | [www.abclonal.com.cn](http://www.abclonal.com.cn)

## Product Information

### Source

Rabbit

### Isotype

IgG

### Purification

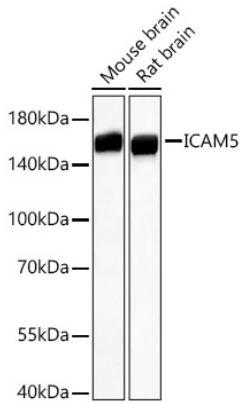
Affinity purification

### Storage

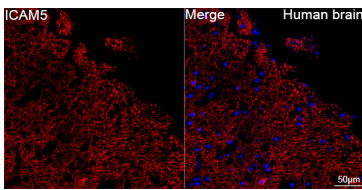
Store at -20°C. Avoid freeze / thaw cycles.

Buffer: PBS with 0.09% Sodium azide,0.05% BSA,50% glycerol,pH7.3.

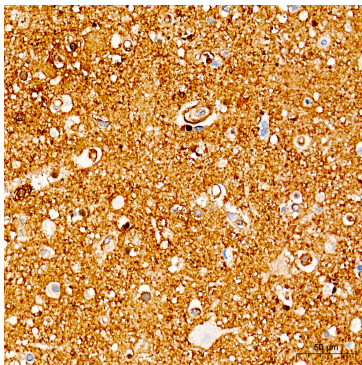
## Validation Data



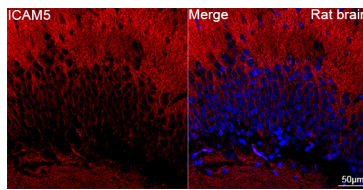
Western blot analysis of various lysates using ICAM5 Rabbit mAb (A26618) at 1:50000 dilution incubated overnight at 4°C.  
 Secondary antibody: HRP-conjugated Goat anti-Rabbit IgG (H+L) (AS014) at 1:10000 dilution.  
 Lysates/proteins: 25 µg per lane.  
 Blocking buffer: 3% nonfat dry milk in TBST.  
 Detection: ECL Basic Kit (RM00020).  
 Exposure time: 10s.



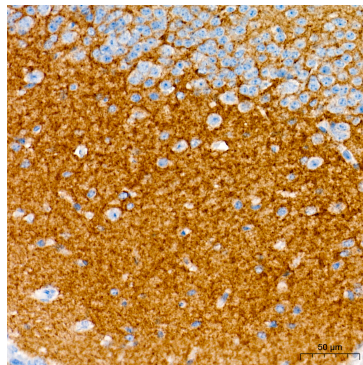
Confocal imaging of paraffin-embedded Human brain tissue using ICAM5 Rabbit mAb (A26618, dilution 1:400) followed by a further incubation with Cy3 Goat Anti-Rabbit IgG (H+L) (AS007, dilution 1:500) (Red). DAPI was used for nuclear staining (Blue). Microwave antigen retrieval performed with 0.01M Citrate Buffer(pH 6.0) prior to IF staining. Objective: 40x.



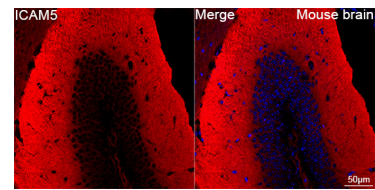
Immunohistochemistry analysis of paraffin-embedded Human brain tissue using ICAM5 Rabbit mAb (A26618) at a dilution of 1:1000 (40x lens). High pressure antigen retrieval performed with 0.01M Tris-EDTA Buffer(pH 9.0) prior to IHC staining.



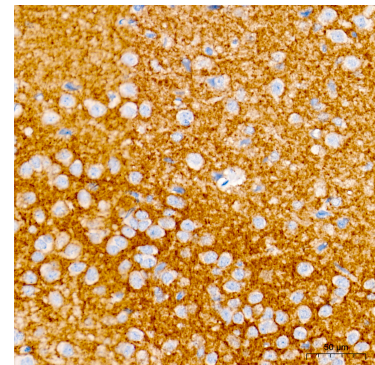
Confocal imaging of paraffin-embedded Rat brain tissue using ICAM5 Rabbit mAb (A26618, dilution 1:400) followed by a further incubation with Cy3 Goat Anti-Rabbit IgG (H+L) (AS007, dilution 1:500) (Red). DAPI was used for nuclear staining (Blue). Microwave antigen retrieval performed with 0.01M Citrate Buffer(pH 6.0) prior to IF staining. Objective: 40x.



Immunohistochemistry analysis of paraffin-embedded Rat brain tissue using ICAM5 Rabbit mAb (A26618) at a dilution of 1:4000 (40x lens). High pressure antigen retrieval performed with 0.01M Tris-EDTA Buffer(pH 9.0) prior to IHC staining.



Confocal imaging of paraffin-embedded Mouse brain tissue using ICAM5 Rabbit mAb (A26618, dilution 1:400) followed by a further incubation with Cy3 Goat Anti-Rabbit IgG (H+L) (AS007, dilution 1:500) (Red). DAPI was used for nuclear staining (Blue). Microwave antigen retrieval performed with 0.01M Citrate Buffer(pH 6.0) prior to IF staining. Objective: 40x.



Immunohistochemistry analysis of paraffin-embedded Rat brain tissue using ICAM5 Rabbit mAb (A26618) at a dilution of 1:4000 (40x lens). High pressure antigen retrieval performed with 0.01M Tris-EDTA Buffer(pH 9.0) prior to IHC staining.