

AFG3L2 Rabbit PolymAb®

Catalog No.: A26628PM

Basic Information

Observed MW

89kDa

Calculated MW

89kDa

Category

Primary antibody

Applications

WB, IP, IF-P, IHC-P, ELISA

Cross-Reactivity

Human, Mouse, Rat

Background

This gene encodes a protein localized in mitochondria and closely related to paraplegin. The paraplegin gene is responsible for an autosomal recessive form of hereditary spastic paraplegia. This gene is a candidate gene for other hereditary spastic paraplegias or neurodegenerative disorders.

Recommended Dilutions

WB 1:15000 - 1:60000

IP 0.5µg-4µg antibody for
400µg-800µg extracts of
whole cells

IF-P 1:3200 - 1:12800

IHC-P 1:4000 - 1:40000

ELISA Recommended starting
concentration is 1 µg/mL.
Please optimize the
concentration based on
your specific assay
requireme

Immunogen Information

Gene ID

10939

Swiss Prot

Q9Y4W6

Immunogen

Recombinant protein (or fragment). This information is considered to be commercially sensitive.

Synonyms

OPA12; SCA28; SPAX5

Product Information

Source

Rabbit

Isotype

IgG

Purification

Affinity purification

Storage

Store at -20°C. Avoid freeze / thaw cycles.

Buffer: PBS with 0.09% Sodium azide, 0.05% BSA, 50% glycerol, pH7.3.

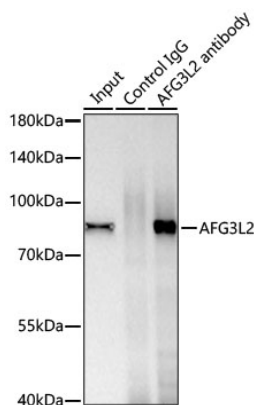
Contact

☎ | 400-999-6126

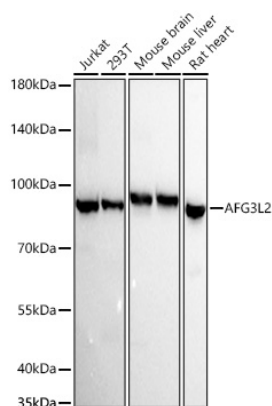
✉ | cn.market@abclonal.com.cn

🌐 | www.abclonal.com.cn

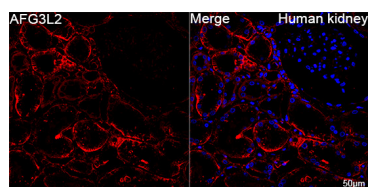
Validation Data



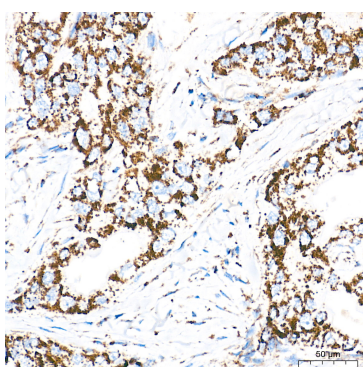
Immunoprecipitation of AFG3L2 from 600 µg extracts of Mouse liver tissue was performed using 1 µg of AFG3L2 Rabbit PolymAb® (A26628PM). Rabbit IgG isotype control (AC042) was used to precipitate the Control IgG sample. IP samples were eluted with 1X reducing Laemmli Buffer. The Input lane represents 10% of the total input. Western blot analysis of immunoprecipitates was conducted using AFG3L2 Rabbit PolymAb® (A26628PM) at a dilution of 1:10000.



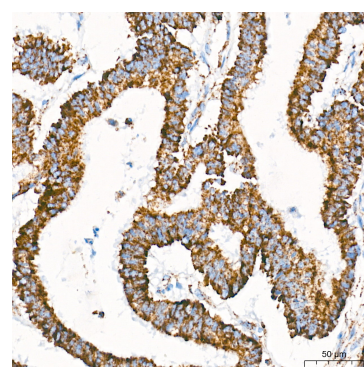
Western blot analysis of various lysates using AFG3L2 Rabbit PolymAb® (A26628PM) at 1:15000 dilution incubated overnight at 4°C. Secondary antibody: HRP-conjugated Goat anti-Rabbit IgG (H+L) (AS014) at 1:10000 dilution. Lysates/proteins: 25 µg per lane. Blocking buffer: 3% nonfat dry milk in TBST. Detection: ECL Basic Kit (RM00020). Exposure time: 20s.



Confocal imaging of paraffin-embedded Human kidney tissue using AFG3L2 Rabbit PolymAb® (A26628PM, dilution 1:3200) followed by a further incubation with Cy3 Goat Anti-Rabbit IgG (H+L) (AS007, dilution 1:500) (Red). DAPI was used for nuclear staining (Blue). High pressure antigen retrieval performed with 0.01M Citrate Buffer(pH 6.0) prior to IF staining. Objective: 40x.

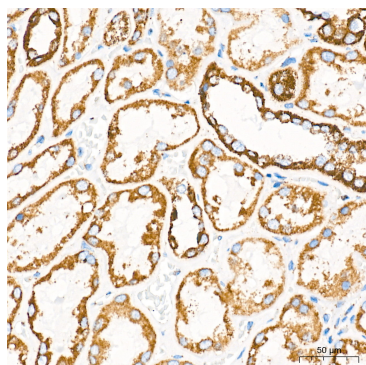


Immunohistochemistry analysis of paraffin-embedded Human breast cancer tissue using AFG3L2 Rabbit PolymAb® (A26628PM) at a dilution of 1:16000 (40x lens). High pressure antigen retrieval performed with 0.01M Citrate Buffer(pH 6.0) prior to IHC staining.

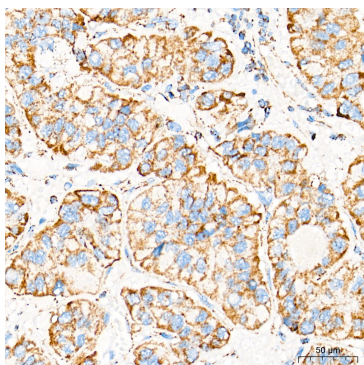


Immunohistochemistry analysis of paraffin-embedded Human colon carcinoma tissue using AFG3L2 Rabbit PolymAb® (A26628PM) at a dilution of 1:16000 (40x lens). High pressure antigen retrieval performed with 0.01M Citrate Buffer(pH 6.0) prior to IHC staining.

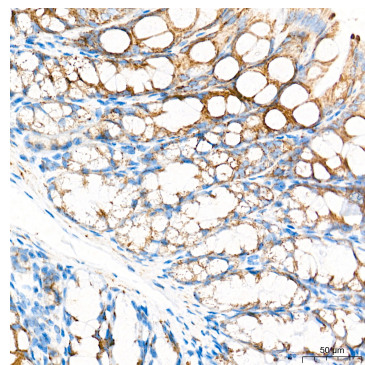
Validation Data



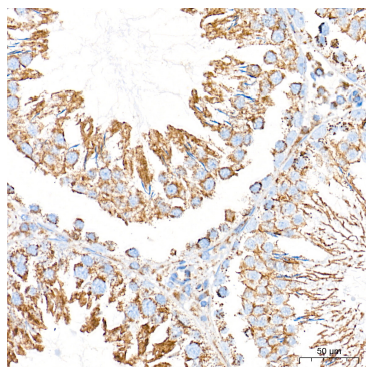
Immunohistochemistry analysis of paraffin-embedded Human kidney tissue using AFG3L2 Rabbit PolymAb® (A26628PM) at a dilution of 1:16000 (40x lens). High pressure antigen retrieval performed with 0.01M Citrate Buffer(pH 6.0) prior to IHC staining.



Immunohistochemistry analysis of paraffin-embedded Human liver cancer tissue using AFG3L2 Rabbit PolymAb® (A26628PM) at a dilution of 1:16000 (40x lens). High pressure antigen retrieval performed with 0.01M Citrate Buffer(pH 6.0) prior to IHC staining.



Immunohistochemistry analysis of paraffin-embedded Mouse colon tissue using AFG3L2 Rabbit PolymAb® (A26628PM) at a dilution of 1:16000 (40x lens). High pressure antigen retrieval performed with 0.01M Citrate Buffer(pH 6.0) prior to IHC staining.



Immunohistochemistry analysis of paraffin-embedded Rat testis tissue using AFG3L2 Rabbit PolymAb® (A26628PM) at a dilution of 1:16000 (40x lens). High pressure antigen retrieval performed with 0.01M Citrate Buffer(pH 6.0) prior to IHC staining.