

ABflo® 700 Rabbit anti-Human CD300F/IREM-1 mAb

Catalog No.: A26634

Basic Information

Observed MW

Calculated MW

18kDa/21kDa/26kDa/32kDa

Category

Primary antibody

Applications

FC

Cross-Reactivity

Human

CloneNo number

ARC63892

Conjugate

ABflo® 700. Ex:690nm. Em:713nm.

Background

This gene encodes a member of the CD300 protein family. Members of this family are cell surface glycoproteins with a single IgV-like extracellular domain, and are involved in the regulation of immune response. The encoded protein is an inhibitory receptor. Alternative splicing results in multiple transcript variants.

Recommended Dilutions

FC 5 µl per 10⁶ cells in
100 µl volume

Immunogen Information

Gene ID

146722

Swiss Prot

Q8TDQ1

Immunogen

Recombinant protein (or fragment). This information is considered to be commercially sensitive.

Synonyms

CD300LF; CD300f; CLM-1; CLM1; IREM-1; IREM1; IgSF13; LMIR3; NKIR; CMRF35-like molecule 1

Contact

 | 400-999-6126

 | cn.market@abclonal.com.cn

 | www.abclonal.com.cn

Product Information

Source

Rabbit

Isotype

IgG

Purification

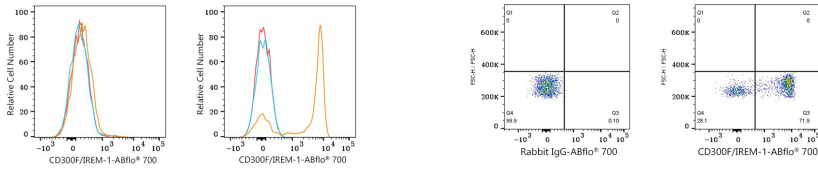
Affinity purification

Storage

Store at 2-8°C. Avoid freeze.

Buffer: PBS with 0.09% Sodium azide, 0.2% BSA, pH7.3.

Validation Data



Flow cytometry: 1×10^6 K-562 cells (negative control, left) and Human PBMC (right) were surface-stained with ABflo® 700 Rabbit anti-Human CD300F/IREM-1 mAb (A26634, 5 μ l/Test, orange line) or ABflo® 700 Rabbit IgG isotype control (A25976, 5 μ l/Test, blue line). Non-fluorescently stained cells were used as blank control (red line).

Flow cytometry: 1×10^6 Human PBMC were surface-stained with ABflo® 700 Rabbit IgG isotype control (A25976, 5 μ l/Test, left) or ABflo® 700 Rabbit anti-Human CD300F/IREM-1 mAb (A26634, 5 μ l/Test, right).