

ABflo® 488 Rabbit anti-Human IL18R1/IL-18 R alpha mAb

Catalog No.: A26645

Basic Information

Observed MW

Calculated MW

62kDa

Category

Primary antibody

Applications

FC

Cross-Reactivity

Human

CloneNo number

ARC70055-ABflo488

Conjugate

ABflo® 488. Ex:491nm. Em:516nm.

Recommended Dilutions

FC 5 µl per 10⁶ cells in
100 µl volume

Background

The protein encoded by this gene is a cytokine receptor that belongs to the interleukin 1 receptor family. This receptor specifically binds interleukin 18 (IL18), and is essential for IL18 mediated signal transduction. IFN-alpha and IL12 are reported to induce the expression of this receptor in NK and T cells. This gene along with four other members of the interleukin 1 receptor family, including IL1R2, IL1R1, ILRL2 (IL-1Rrp2), and IL1RL1 (T1/ST2), form a gene cluster on chromosome 2q. Alternatively spliced transcript variants encoding different isoforms have been found for this gene.

Immunogen Information

Gene ID

8809

Swiss Prot

Q13478

Immunogen

Recombinant fusion protein containing a sequence corresponding to amino acids 22-329 of human IL18R1/IL-18 R alpha (NP_003846.1).

Synonyms

CD218a; IL18RA; IL1RRP; CDw218a; IL-1Rrp; IL-18Ralpha; IL18Ralpha2; IL-18R-alpha

Contact

 | 400-999-6126

 | cn.market@abclonal.com.cn

 | www.abclonal.com.cn

Product Information

Source

Rabbit

Isotype

IgG

Purification

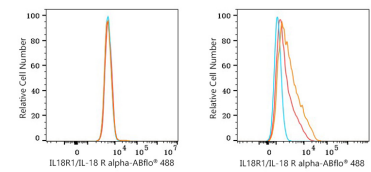
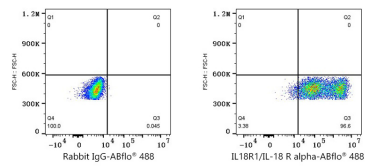
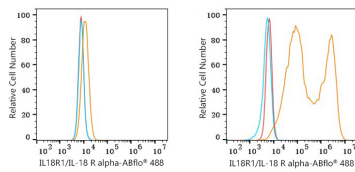
Affinity purification

Storage

Store at 2-8°C. Avoid freeze.

Buffer: PBS with 0.09% Sodium azide,0.2% BSA,pH7.3.

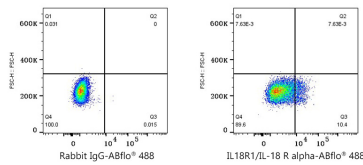
Validation Data



Flow cytometry: 1×10^6 293T cells (negative control, left) and 293T (Transfection, right) cells were surface-stained with ABflo® 488 Rabbit anti-Human IL18R1/IL-18 R alpha mAb (A26645,5 $\mu\text{l}/\text{Test}$, orange line) or ABflo® 488 Rabbit IgG isotype control (A22069,5 $\mu\text{l}/\text{Test}$, blue line). Non-fluorescently stained cells were used as blank control (red line).

Flow cytometry: 1×10^6 293T (Transfection) cells were surface-stained with ABflo® 488 Rabbit IgG isotype control (A22069,5 $\mu\text{l}/\text{Test}$, left) or ABflo® 488 Rabbit anti-Human IL18R1/IL-18 R alpha mAb (A26645,5 $\mu\text{l}/\text{Test}$, right).

Flow cytometry: 1×10^6 THP-1 cells (negative control, left) and Human PBMC (right) were surface-stained with ABflo® 488 Rabbit anti-Human IL18R1/IL-18 R alpha mAb (A26645,5 $\mu\text{l}/\text{Test}$, orange line) or ABflo® 488 Rabbit IgG isotype control (A22069,5 $\mu\text{l}/\text{Test}$, blue line). Non-fluorescently stained cells were used as blank control (red line).



Flow cytometry: 1×10^6 Human PBMC were surface-stained with ABflo® 488 Rabbit IgG isotype control (A22069,5 $\mu\text{l}/\text{Test}$, left) or ABflo® 488 Rabbit anti-Human IL18R1/IL-18 R alpha mAb (A26645,5 $\mu\text{l}/\text{Test}$, right). Cells in the lymphocytes gate were used for analysis.