

# ABflo® 647 Rabbit anti-Human IL18R1/IL-18 R alpha mAb

Catalog No.: A26646

## Basic Information

### Observed MW

### Calculated MW

62kDa

### Category

Primary antibody

### Applications

FC

### Cross-Reactivity

Human

### CloneNo number

ARC70055-ABflo647

### Conjugate

ABflo® 647. Ex:648nm. Em:664nm.

## Recommended Dilutions

FC 5 µl per 10<sup>6</sup> cells in  
100 µl volume

## Background

The protein encoded by this gene is a cytokine receptor that belongs to the interleukin 1 receptor family. This receptor specifically binds interleukin 18 (IL18), and is essential for IL18 mediated signal transduction. IFN-alpha and IL12 are reported to induce the expression of this receptor in NK and T cells. This gene along with four other members of the interleukin 1 receptor family, including IL1R2, IL1R1, ILRL2 (IL-1Rrp2), and IL1RL1 (T1/ST2), form a gene cluster on chromosome 2q. Alternatively spliced transcript variants encoding different isoforms have been found for this gene.

## Immunogen Information

### Gene ID

8809

### Swiss Prot

Q13478

### Immunogen

Recombinant fusion protein containing a sequence corresponding to amino acids 22-329 of human IL18R1/IL-18 R alpha (NP\_003846.1).

### Synonyms

CD218a; IL18RA; IL1RRP; CDw218a; IL-1Rrp; IL-18Ralpha; IL18Ralpha2; IL-18R-alpha

## Contact

☎ | 400-999-6126

✉ | [cn.market@abclonal.com.cn](mailto:cn.market@abclonal.com.cn)

🌐 | [www.abclonal.com.cn](http://www.abclonal.com.cn)

## Product Information

### Source

Rabbit

### Isotype

IgG

### Purification

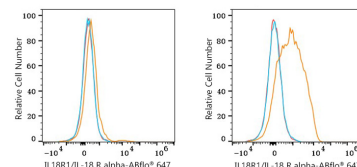
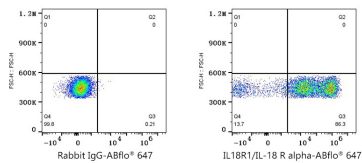
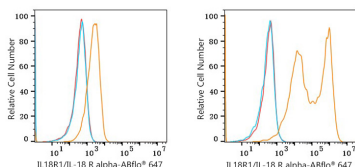
Affinity purification

### Storage

Store at 2-8°C. Avoid freeze.

Buffer: PBS with 0.09% Sodium azide,0.2% BSA,pH7.3.

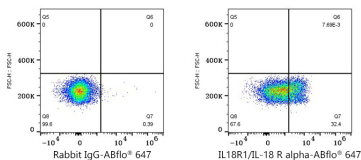
## Validation Data



Flow cytometry:  $1 \times 10^6$  293T cells (negative control, left) and 293T (Transfection, right) cells were surface-stained with ABflo® 647 Rabbit anti-Human IL18R1/IL-18 R alpha mAb (A26646,5  $\mu$ l/Test, orange line) or ABflo® 647 Rabbit IgG isotype control (A22070,5  $\mu$ l/Test, blue line). Non-fluorescently stained cells were used as blank control (red line).

Flow cytometry:  $1 \times 10^6$  293T (Transfection) cells were surface-stained with ABflo® 647 Rabbit IgG isotype control (A22070,5  $\mu$ l/Test, left) or ABflo® 647 Rabbit anti-Human IL18R1/IL-18 R alpha mAb (A26646,5  $\mu$ l/Test, right).

Flow cytometry:  $1 \times 10^6$  THP-1 cells (negative control, left) and Human PBMC (right) were surface-stained with ABflo® 647 Rabbit anti-Human IL18R1/IL-18 R alpha mAb (A26646,5  $\mu$ l/Test, orange line) or ABflo® 647 Rabbit IgG isotype control (A22070,5  $\mu$ l/Test, blue line). Non-fluorescently stained cells were used as blank control (red line).



Flow cytometry:  $1 \times 10^6$  Human PBMC were surface-stained with ABflo® 647 Rabbit IgG isotype control (A22070,5  $\mu$ l/Test, left) or ABflo® 647 Rabbit anti-Human IL18R1/IL-18 R alpha mAb (A26646,5  $\mu$ l/Test, right). Cells in the lymphocytes gate were used for analysis.