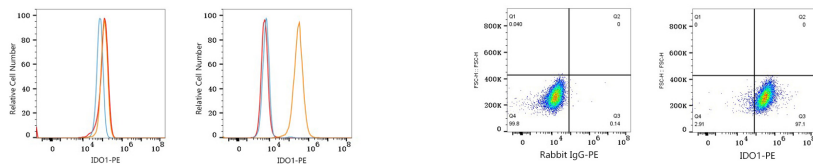




## Validation Data



1X10<sup>6</sup> A549 cells (negative control, left) and A549 (treated with hIFN- $\gamma$ , right) cells were intracellularly-stained with PE Rabbit anti-Human IDO1 mAb (A26647, 5  $\mu$ l/Test, orange line) or PE Rabbit IgG isotype control (A24172, 5  $\mu$ l/Test, blue line). Non-fluorescently stained cells were used as blank control (red line).

Flow cytometry: 1X10<sup>6</sup> A549 (treated with hIFN- $\gamma$ , right) cells were intracellularly-stained with PE Rabbit IgG isotype control (A24172, 5  $\mu$ l/Test, left) or PE Rabbit anti-Human IDO1 mAb (A26647, 5  $\mu$ l/Test, right).