

# ABflo® 488 Rabbit anti-Mouse CD49a/ITGA1 mAb

Catalog No.: A26654

## Basic Information

### Observed MW

Refer to figures

### Calculated MW

130kDa

### Category

Primary antibody

### Applications

FC

### Cross-Reactivity

Mouse

### CloneNo number

ARC68868

### Conjugate

ABflo® 488. Ex:491nm. Em:516nm.

## Recommended Dilutions

**FC** 5  $\mu$ l per  $10^6$  cells in  
100  $\mu$ l volume

## Background

CD49a is a 1179 aa, type I transmembrane glycoprotein also known as  $\alpha$ 1 integrin, VLA-1  $\alpha$  chain, or integrin  $\alpha$ 1. It associates antibody v042010 with CD29 ( $\beta$ 1 integrin) to form the VLA-1 complex, a collagen IV and alminin-1 receptor that is expressed on activated T cells, smooth muscle cells, endothelial cells, neuronal cells, fibroblasts, and mesenchymal cells. CD49a is an adhesion molecule and is involved in the regulation of leukocyte migration, T cell proliferation, and cytokine production.

## Immunogen Information

### Gene ID

109700

### Swiss Prot

Q3V3R4

### Immunogen

Recombinant protein (or fragment). This information is considered to be commercially sensitive.


### Synonyms

Vla1; CD49A; E130012M19Rik

## Contact

 | 400-999-6126

 | [cn.market@abclonal.com.cn](mailto:cn.market@abclonal.com.cn)

 | [www.abclonal.com.cn](http://www.abclonal.com.cn)

## Product Information

### Source

Rabbit

### Isotype

IgG

### Purification

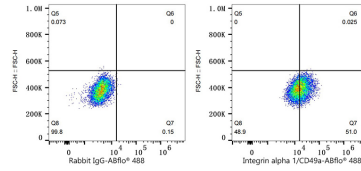
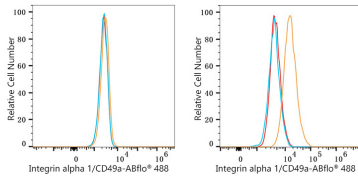
Affinity purification

### Storage

Store at 2-8°C. Avoid freeze.

Buffer: PBS with 0.09% Sodium azide, 0.2% BSA, pH7.3.

## Validation Data



Flow cytometry:  $1 \times 10^6$  NIH/3T3 cells (negative control, left) and Neuro-2a cells (right) were surface-stained with ABflo® 488 Rabbit anti-Mouse Integrin alpha 1/CD49a mAb (A26654,5 µl/Test, orange line) or ABflo® 488 Rabbit IgG isotype control (A22069,5 µl/Test, blue line). Non-fluorescently stained cells were used as blank control (red line).

Flow cytometry:  $1 \times 10^6$  Neuro-2a cells were surface-stained with ABflo® 488 Rabbit IgG isotype control (A22069,5 µl/Test, left) or ABflo® 488 Rabbit anti-Mouse Integrin alpha 1/CD49a mAb (A26654,5 µl/Test, right).