

ABflo® 647 Rabbit anti-Mouse Integrin alpha 1/CD49a mAb

Catalog No.: A26655

Basic Information

Observed MW

Refer to figures

Calculated MW

130kDa

Category

Primary antibody

Applications

FC

Cross-Reactivity

Mouse

CloneNo number

ARC68868-ABflo647

Conjugate

ABflo® 647. Ex:648nm. Em:664nm.

Recommended Dilutions

FC 5 µl per 10⁶ cells in
100 µl volume

Background

CD49a is a 1179 aa, type I transmembrane glycoprotein also known as α1 integrin, VLA-1 α chain, or integrin α1. It associates antibody v042010 with CD29 (β1 integrin) to form the VLA-1 complex, a collagen IV and alminin-1 receptor that is expressed on activated T cells, smooth muscle cells, endothelial cells, neuronal cells, fibroblasts, and mesenchymal cells. CD49a is an adhesion molecule and is involved in the regulation of leukocyte migration, T cell proliferation, and cytokine production.

Immunogen Information

Gene ID

109700

Swiss Prot

Q3V3R4

Immunogen

Recombinant fusion protein containing a sequence corresponding to amino acids 29-1141 of mouse Integrin alpha 1/CD49a (NP_001028400.2).

Synonyms

Vla1; CD49A; E130012M19Rik

Contact

 | 400-999-6126

 | cn.market@abclonal.com.cn

 | www.abclonal.com.cn

Product Information

Source

Rabbit

Isotype

IgG

Purification

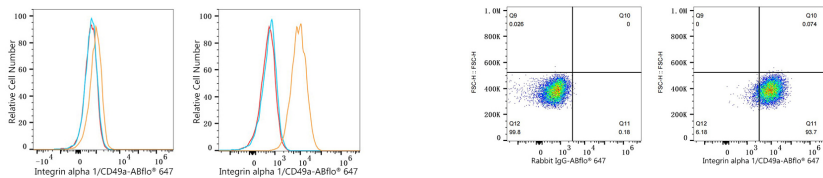
Affinity purification

Storage

Store at 2-8°C. Avoid freeze.

Buffer: PBS with 0.09% Sodium azide,0.2% BSA,pH7.3.

Validation Data



Flow cytometry: 1×10^6 NIH/3T3 cells (negative control, left) and Neuro-2a cells (right) were surface-stained with ABflo® 647 Rabbit anti-Mouse Integrin alpha 1/CD49a mAb (A26655, 5 μ l/Test, orange line) or ABflo® 647 Rabbit Ig isotype control (A22070, 5 μ l/Test, blue line). Non-fluorescently stained cells were used as blank control (red line).

Flow cytometry: 1×10^6 Neuro-2a cells were surface-stained with ABflo® 647 Rabbit IgG isotype control (A22070, 5 μ l/Test, left) or ABflo® 647 Rabbit anti-Mouse Integrin alpha 1/CD49a mAb (A26655, 5 μ l/Test, right).