

PE Rabbit anti-Human GPRC5D mAb

Catalog No.: A26658

Basic Information

Observed MW

Calculated MW

34kDa/36kDa/38kDa

Category

Primary antibody

Applications

FC

Cross-Reactivity

Human

CloneNo number

ARC66572-PE

Conjugate

PE. Ex:565nm. Em:574nm.

Background

The protein encoded by this gene is a member of the G protein-coupled receptor family; however, the specific function of this gene has not yet been determined.

Recommended Dilutions

FC 5 μ l per 10^6 cells in
100 μ l volume

Immunogen Information

Gene ID

55507

Swiss Prot

Q9NZD1

Immunogen

A synthetic peptide corresponding to a sequence within amino acids 1-100 of human GPRC5D (NP_061124.1).

Synonyms

GPRC5D

Contact

 | 400-999-6126

 | cn.market@abclonal.com.cn

 | www.abclonal.com.cn

Product Information

Source

Rabbit

Isotype

IgG

Purification

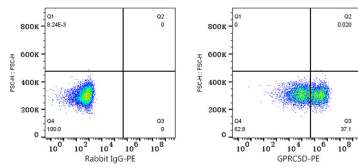
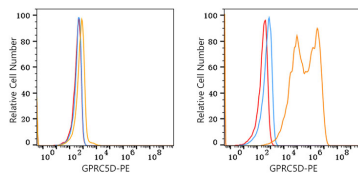
Affinity purification

Storage

Store at 2-8°C. Avoid freeze.

Buffer: PBS with 0.09% Sodium azide,0.2% BSA,pH7.3.

Validation Data



Flow cytometry: 1×10^6 293T cells (negative control, left) and 293T (Transfection, right) cells were surface-stained with PE Rabbit anti-Human GPRC5D mAb (A26658, 5 μ l/Test, orange line) or PE Rabbit IgG isotype control (A24172, 5 μ l/Test, blue line). Non-fluorescently stained cells were used as blank control (red line).

Flow cytometry: 1×10^6 293T (Transfection) cells were surface-stained with PE Rabbit IgG isotype control (A24172, 5 μ l/Test, left) or PE Rabbit anti-Human GPRC5D mAb (A26658, 5 μ l/Test, right).