

CD1d Rabbit mAb

Catalog No.: A26678 **Recombinant**

Basic Information

Observed MW

38 kDa (unglycosylation)/55 kDa (glycosylation)

Calculated MW

39 kDa/38 kDa

Category

Primary antibody

Applications

WB,IF-P,ELISA

Cross-Reactivity

Mouse, Rat

CloneNo number

ARC68856

Background

Enables T cell receptor binding activity and endogenous lipid antigen binding activity. Involved in NK T cell differentiation and regulation of immature T cell proliferation in thymus. Acts upstream of or within several processes, including antigen processing and presentation, exogenous lipid antigen via MHC class Ib; positive regulation of cytokine production; and positive regulation of leukocyte activation. Located in endosome; external side of plasma membrane; and lysosome. Is expressed in forebrain; intestine; jaw bone; and liver. Human ortholog(s) of this gene implicated in pulmonary tuberculosis. Orthologous to human CD1D (CD1d molecule).

Recommended Dilutions

WB 1:5000 - 1:25000

IF-P 1:150 - 1:1500

ELISA Recommended starting concentration is 1 µg/mL. Please optimize the concentration based on your specific assay requirements.

Immunogen Information

Gene ID

12479/12480

Swiss Prot

P11609/P11610

Immunogen

Recombinant protein (or fragment). This information is considered to be commercially sensitive.

Synonyms

Cd1a; Cd1d; CD1.1; Ly-38

Contact

☎ | 400-999-6126

✉ | cn.market@abclonal.com.cn

🌐 | www.abclonal.com.cn

Product Information

Source

Rabbit

Isotype

IgG

Purification

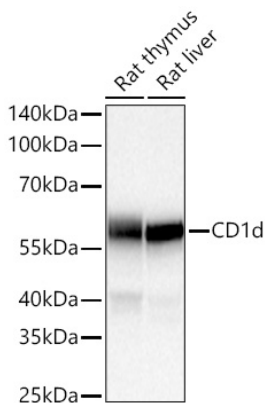
Affinity purification

Storage

Store at -20°C. Avoid freeze / thaw cycles.

Buffer: PBS with 0.09% Sodium azide, 0.05% BSA, 50% glycerol, pH7.3.

Validation Data



Western blot analysis of various lysates using CD1d Rabbit mAb (A26678) at 1:25000 dilution incubated overnight at 4°C.

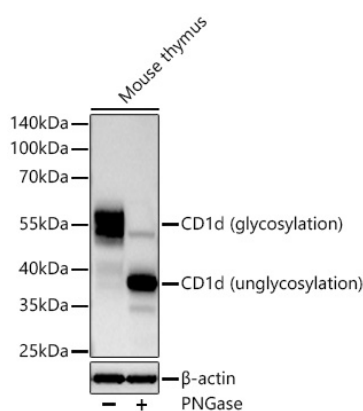
Secondary antibody: HRP-conjugated Goat anti-Rabbit IgG (H+L) (AS014) at 1:10000 dilution.

Lysates/proteins: 25 µg per lane.

Blocking buffer: 3% nonfat dry milk in TBST.

Detection: ECL Basic Kit (RM00020).

Exposure time: 45s.



Western blot analysis of lysates from Mouse thymus using CD1d Rabbit mAb (A26678) at 1:5000 dilution incubated overnight at 4°C.

Mouse thymus treated with PNGase F (6 U/ul) at 37°C for 1 hours.

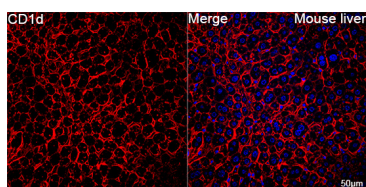
Secondary antibody: HRP-conjugated Goat anti-Rabbit IgG (H+L) (AS014) at 1:10000 dilution.

Lysates/proteins: 30 µg per lane.

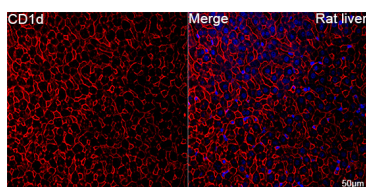
Blocking buffer: 3% nonfat dry milk in TBST.

Detection: ECL Basic Kit (RM00020).

Exposure time: 90 s.



Confocal imaging of paraffin-embedded Mouse liver tissue using CD1d Rabbit mAb (A26678, dilution 1:200) followed by a further incubation with Cy3 Goat Anti-Rabbit IgG (H+L) (AS007, dilution 1:500) (Red). DAPI was used for nuclear staining (Blue). High pressure antigen retrieval performed with 0.01M Citrate Buffer(pH 6.0) prior to IF staining. Objective: 40x.



Confocal imaging of paraffin-embedded Rat liver tissue using CD1d Rabbit mAb (A26678, dilution 1:200) followed by a further incubation with Cy3 Goat Anti-Rabbit IgG (H+L) (AS007, dilution 1:500) (Red). DAPI was used for nuclear staining (Blue). High pressure antigen retrieval performed with 0.01M Citrate Buffer(pH 6.0) prior to IF staining. Objective: 40x.