

# ABflo® 700 Rabbit anti-Human CD7 mAb

Catalog No.: A26679

## Basic Information

### Observed MW

**Calculated MW**  
25kDa

**Category**  
Primary antibody

**Applications**  
FC

**Cross-Reactivity**  
Human

**CloneNo number**  
ARC54668-ABflo700

**Conjugate**  
ABflo® 700. Ex:690nm. Em:713nm.

## Recommended Dilutions

**FC** 5 µl per 10<sup>6</sup> cells in  
100 µl volume

## Background

This gene encodes a transmembrane protein which is a member of the immunoglobulin superfamily. This protein is found on thymocytes and mature T cells. It plays an essential role in T-cell interactions and also in T-cell/B-cell interaction during early lymphoid development.

## Immunogen Information

Gene ID	Swiss Prot
924	P09564

**Immunogen**  
Recombinant fusion protein containing a sequence corresponding to amino acids 26-180 of human CD7 (NP\_006128.1).

**Synonyms**  
GP40; TP41; Tp40; LEU-9

## Contact

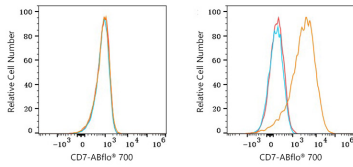
 | 400-999-6126  
 | [cn.market@abclonal.com.cn](mailto:cn.market@abclonal.com.cn)  
 | [www.abclonal.com.cn](http://www.abclonal.com.cn)

## Product Information

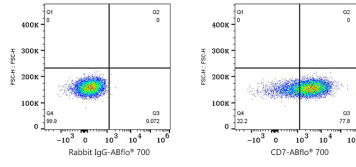
Source	Isotype	Purification
Rabbit	IgG	Affinity purification

**Storage**  
Store at 2-8°C. Avoid freeze.  
Buffer: PBS with 0.09% Sodium azide,0.2% BSA,pH7.3.

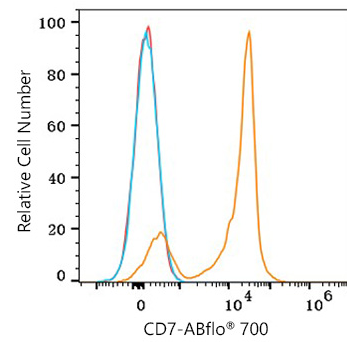
## Validation Data



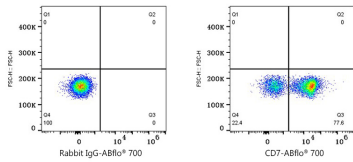
Flow cytometry: 1X10<sup>6</sup> A549 cells (negative control, left) and MOLT-4 cells (right) were surface-stained with ABflo® 700 Rabbit anti-Human CD7 mAb (A26679, 5 µl/Test, orange line) or ABflo® 700 Rabbit IgG isotype control (A25976, 5 µl/Test, blue line). Non-fluorescently stained cells were used as blank control (red line).



Flow cytometry: 1X10<sup>6</sup> MOLT-4 cells were surface-stained with ABflo® 700 Rabbit IgG isotype control (A25976, 5 µl/Test, left) or ABflo® 700 Rabbit anti-Human CD7 mAb (A26679, 5 µl/Test, right).



Flow cytometry: 1X10<sup>6</sup> Human PBMC were surface-stained with ABflo® 700 Rabbit anti-Human CD7 mAb (A26679, 5 µl/Test, orange line) or ABflo® 700 Rabbit IgG isotype control (A25976, 5 µl/Test, blue line). Non-fluorescently stained cells were used as blank control (red line).



Flow cytometry: 1X10<sup>6</sup> Human PBMC were surface-stained with ABflo® 700 Rabbit IgG isotype control (A25976, 5 µl/Test, left) or ABflo® 700 Rabbit anti-Human CD7 mAb (A26679, 5 µl/Test, right). Cells in the Monocytes gate were used for analysis.