

PE Rabbit anti-Human CD94 mAb

Catalog No.: A26686

Basic Information

Observed MW

Refer to figures

Calculated MW

17kDa/20kDa

Category

Primary antibody

Applications

FC

Cross-Reactivity

Human

CloneNo number

ARC60983

Conjugate

PE. Ex:565nm. Em:574nm.

Recommended Dilutions

FC 5 μ l per 10^6 cells in
100 μ l volume

Background

Natural killer (NK) cells are a distinct lineage of lymphocytes that mediate cytotoxic activity and secrete cytokines upon immune stimulation. Several genes of the C-type lectin superfamily, including members of the NKG2 family, are expressed by NK cells and may be involved in the regulation of NK cell function. KLRD1 (CD94) is an antigen preferentially expressed on NK cells and is classified as a type II membrane protein because it has an external C terminus. Three transcript variants encoding two different isoforms have been found for this gene.

Immunogen Information

Gene ID

3824

Swiss Prot

Q13241

Immunogen

Recombinant protein (or fragment). This information is considered to be commercially sensitive.

Synonyms

CD94

Contact

☎ | 400-999-6126

✉ | cn.market@abclonal.com.cn

🌐 | www.abclonal.com.cn

Product Information

Source

Rabbit

Isotype

IgG

Purification

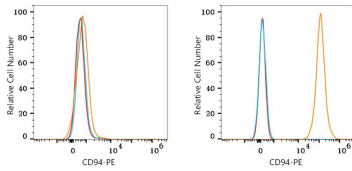
Affinity purification

Storage

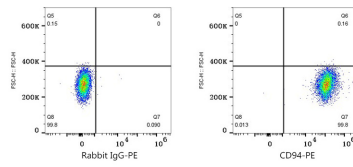
Store at 2-8°C. Avoid freeze.

Buffer: PBS with 0.09% Sodium azide, 0.2% BSA, pH7.3.

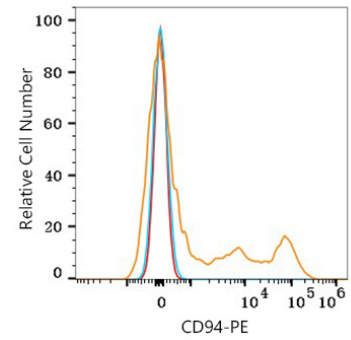
Validation Data



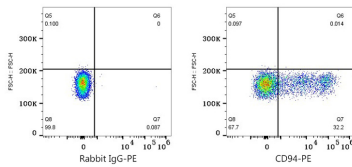
Flow cytometry: 1×10^6 HAP1 cells (negative control, left) and NK-92MI cells (right) were surface-stained with PE Rabbit anti-Human CD94 mAb (A26686, 5 $\mu\text{l}/\text{Test}$, orange line) or PE Rabbit IgG isotype control (A24172, 5 $\mu\text{l}/\text{Test}$, blue line). Non-fluorescently stained cells were used as blank control (red line).



Flow cytometry: 1×10^6 NK-92MI cells were surface-stained with PE Rabbit IgG isotype control (A24172, 5 $\mu\text{l}/\text{Test}$, left) or PE Rabbit anti-Human CD94 mAb (A26686, 5 $\mu\text{l}/\text{Test}$, right).



Flow cytometry: 1×10^6 Human PBMC were surface-stained with PE Rabbit anti-Human CD94 mAb (A26686, 5 $\mu\text{l}/\text{Test}$, orange line) or PE Rabbit IgG isotype control (A24172, 5 $\mu\text{l}/\text{Test}$, blue line). Non-fluorescently stained cells were used as blank control (red line). Cells in the Lymphocytes gate were used for analysis.



Flow cytometry: 1×10^6 Human PBMC were surface-stained with PE Rabbit IgG isotype control (A24172, 5 $\mu\text{l}/\text{Test}$, left) or PE Rabbit anti-Human CD94 mAb (A26686, 5 $\mu\text{l}/\text{Test}$, right). Cells in the Lymphocytes gate were used for analysis.