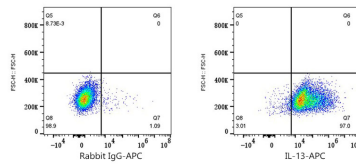
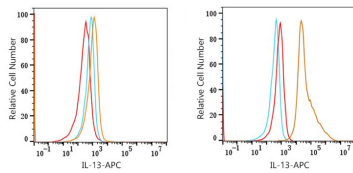


Validation Data



Flow cytometry: 1×10^6 CHO cells (negative control, left) and CHO (Transfection, right) cells were intracellularly-stained with APC Rabbit anti-Mouse IL-13 mAb (A26688, 5 μ l/Test, orange line) or APC Rabbit IgG isotype control (A24173, 5 μ l/Test, blue line). Non-fluorescently stained cells were used as blank control (red line).

Flow cytometry: 1×10^6 CHO (Transfection) cells were intracellularly-stained with APC Rabbit IgG isotype control (A24173, 5 μ l/Test, left) or APC Rabbit anti-Mouse IL-13 mAb (A26688, 5 μ l/Test, right).