

# PE Rabbit anti-Mouse CD140b/PDGFR $\beta$ mAb

Catalog No.: A26689

## Basic Information

### Observed MW

### Calculated MW

123kDa

### Category

Primary antibody

### Applications

FC

### Cross-Reactivity

Mouse

### CloneNo number

ARC69297

### Conjugate

PE. Ex:565nm. Em:574nm.

## Recommended Dilutions

FC 5  $\mu$ l per  $10^6$  cells in  
100  $\mu$ l volume

## Background

Enables platelet-derived growth factor-activated receptor activity and signaling receptor binding activity. Involved in several processes, including positive regulation of intracellular signal transduction; protein phosphorylation; and vasculature development. Acts upstream of or within several processes, including animal organ development; response to ceramide; and ruffle assembly. Located in cell surface; cytoplasm; and ruffle. Is expressed in several structures, including alimentary system; extraembryonic component; genitourinary system; nervous system; and sensory organ. Used to study basal ganglia calcification; infantile myofibromatosis; myeloproliferative neoplasm; and severe nonproliferative diabetic retinopathy. Human ortholog(s) of this gene implicated in basal ganglia calcification; glioblastoma; infantile myofibromatosis; myeloproliferative neoplasm (multiple); and renal cell carcinoma. Orthologous to human PDGFRB (platelet derived growth factor receptor beta).

## Immunogen Information

### Gene ID

18596

### Swiss Prot

P05622

### Immunogen

Recombinant protein (or fragment). This information is considered to be commercially sensitive.

### Synonyms

Pdgfr; CD140b; PDGFR-1

## Contact

☎ | 400-999-6126

✉ | [cn.market@abclonal.com.cn](mailto:cn.market@abclonal.com.cn)

🌐 | [www.abclonal.com.cn](http://www.abclonal.com.cn)

## Product Information

### Source

Rabbit

### Isotype

IgG

### Purification

Affinity purification

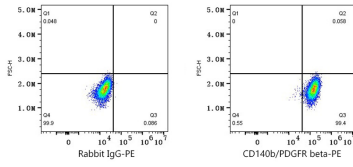
### Storage

Store at 2-8°C. Avoid freeze.

Buffer: PBS with 0.09% Sodium azide, 0.2% BSA, pH7.3.

## Validation Data

---



Flow cytometry:  $1 \times 10^6$  NIH/3T3 cells were surface-stained with PE Rabbit IgG isotype control (A24172, 5  $\mu$ l/Test, left) or PE Rabbit anti-Mouse CD140b/PDGFR beta mAb (A26689, 5  $\mu$ l/Test, right).