

ABflo® 488 Rabbit anti-Mouse CD140b/PDGFR beta mAb

Catalog No.: A26690

Basic Information

Observed MW

Calculated MW

123kDa

Category

Primary antibody

Applications

FC

Cross-Reactivity

Mouse

CloneNo number

ARC69297-ABflo488

Conjugate

ABflo® 488. Ex:491nm. Em:516nm.

Recommended Dilutions

FC 5 µl per 10⁶ cells in
100 µl volume

Background

Enables platelet-derived growth factor-activated receptor activity and signaling receptor binding activity. Involved in several processes, including positive regulation of intracellular signal transduction; protein phosphorylation; and vasculature development. Acts upstream of or within several processes, including animal organ development; response to ceramide; and ruffle assembly. Located in cell surface; cytoplasm; and ruffle. Is expressed in several structures, including alimentary system; extraembryonic component; genitourinary system; nervous system; and sensory organ. Used to study basal ganglia calcification; infantile myofibromatosis; myeloproliferative neoplasm; and severe nonproliferative diabetic retinopathy. Human ortholog(s) of this gene implicated in basal ganglia calcification; glioblastoma; infantile myofibromatosis; myeloproliferative neoplasm (multiple); and renal cell carcinoma. Orthologous to human PDGFRB (platelet derived growth factor receptor beta).

Immunogen Information

Gene ID

18596

Swiss Prot

P05622

Immunogen

Recombinant fusion protein containing a sequence corresponding to amino acids 32-530 of mouse CD140b/PDGFR beta (NP_032835.2).

Synonyms

Pdgfr; CD140b; PDGFR-1

Contact

☎ | 400-999-6126

✉ | cn.market@abclonal.com.cn

🌐 | www.abclonal.com.cn

Product Information

Source

Rabbit

Isotype

IgG

Purification

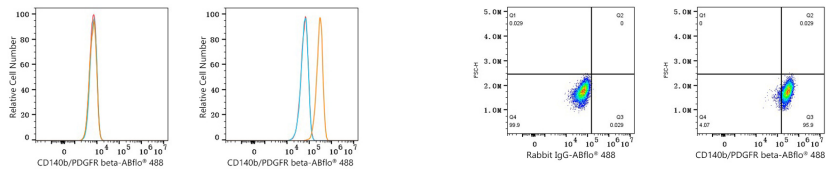
Affinity purification

Storage

Store at 2-8°C. Avoid freeze.

Buffer: PBS with 0.09% Sodium azide, 0.2% BSA, pH7.3.

Validation Data



Flow cytometry: 1×10^6 CTLL-2 cells (negative control, left) and NIH/3T3 cells (right) were surface-stained with ABflo® 488 Rabbit anti-Mouse CD140b/PDGFR beta mAb (A26690, 5 μ l/Test, orange line) or ABflo® 488 Rabbit IgG isotype control (A22069, 5 μ l/Test, blue line). Non-fluorescently stained cells were used as blank control (red line).

Flow cytometry: 1×10^6 NIH/3T3 cells were surface-stained with ABflo® 488 Rabbit IgG isotype control (A22069, 5 μ l/Test, left) or ABflo® 488 Rabbit anti-Mouse CD140b/PDGFR beta mAb (A26690, 5 μ l/Test, right).