

CDK1/2 Rabbit PolymAb®

Catalog No.: A26696PM

Basic Information

Observed MW

33kDa/34kDa

Calculated MW

34kDa

Category

Primary antibody

Applications

WB, IHC-P, IF/ICC, ELISA

Cross-Reactivity

Human, Mouse

Background

This gene encodes a member of a family of serine/threonine protein kinases that participate in cell cycle regulation. The encoded protein is the catalytic subunit of the cyclin-dependent protein kinase complex, which regulates progression through the cell cycle. Activity of this protein is especially critical during the G1 to S phase transition. This protein associates with and regulated by other subunits of the complex including cyclin A or E, CDK inhibitor p21Cip1 (CDKN1A), and p27Kip1 (CDKN1B). Alternative splicing results in multiple transcript variants.

Recommended Dilutions

| | |
|---------------|---|
| WB | 1:3000 - 1:12000 |
| IHC-P | 1:200 - 1:2000 |
| IF/ICC | 1:200 - 1:800 |
| ELISA | Recommended starting concentration is 1 µg/mL. Please optimize the concentration based on your specific assay requirements. |

Contact

| | |
|---|---------------------------|
| ☎ | 400-999-6126 |
| ✉ | cn.market@abclonal.com.cn |
| 🌐 | www.abclonal.com.cn |

Immunogen Information

Gene ID

983/1017

Swiss Prot

P06493/P24941

Immunogen

Recombinant fusion protein containing a sequence corresponding to amino acids 199-298 of human CDK1/2 (P24941).

Synonyms

CDC2; CDC28A; P34CDC2; CDKN2; p33(CDK2)

Product Information

Source

Rabbit

Isotype

IgG

Purification

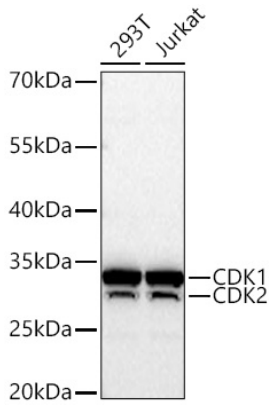
Affinity purification

Storage

Store at -20°C. Avoid freeze / thaw cycles.

Buffer: PBS with 0.09% Sodium azide, 0.05% BSA, 50% glycerol, pH7.3.

Validation Data



Western blot analysis of various lysates using CDK1/2 Rabbit PolymAb® (A26696PM) at 1:3000 dilution incubated overnight at 4°C.

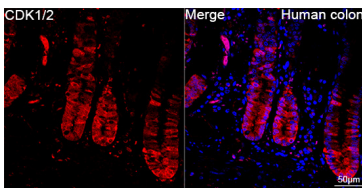
Secondary antibody: HRP-conjugated Goat anti-Rabbit IgG (H+L) (AS014) at 1:10000 dilution.

Lysates/proteins: 25 µg per lane.

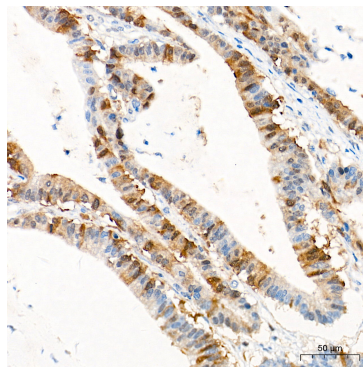
Blocking buffer: 3% nonfat dry milk in TBST.

Detection: ECL Basic Kit (RM00020).

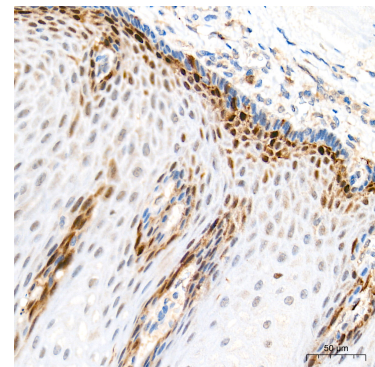
Exposure time: 20s.



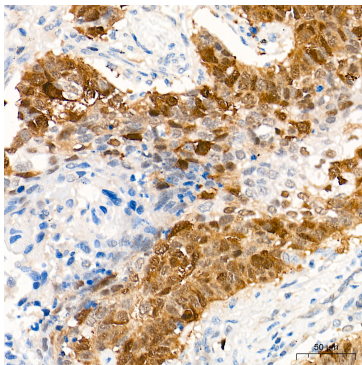
Confocal imaging of paraffin-embedded Human colon tissue using CDK1/2 Rabbit PolymAb® (A26696PM, dilution 1:200) followed by a further incubation with Cy3 Goat Anti-Rabbit IgG (H+L) (AS007, dilution 1:500) (Red). DAPI was used for nuclear staining (Blue). High pressure antigen retrieval performed with 0.01M Citrate Buffer(pH 6.0) prior to IF staining. Objective: 40x.



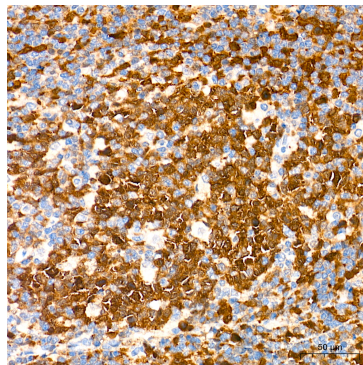
Immunohistochemistry analysis of paraffin-embedded Human colon carcinoma tissue using CDK1/2 Rabbit PolymAb® (A26696PM) at a dilution of 1:200 (40x lens). High pressure antigen retrieval performed with 0.01M Tris-EDTA Buffer(pH 9.0) prior to IHC staining.



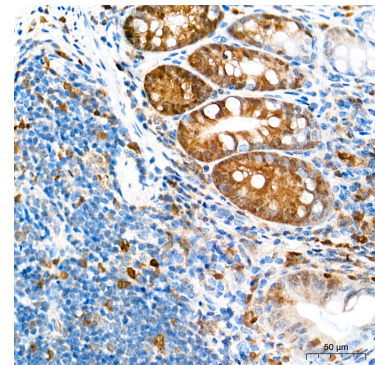
Immunohistochemistry analysis of paraffin-embedded Human esophagus tissue using CDK1/2 Rabbit PolymAb® (A26696PM) at a dilution of 1:200 (40x lens). High pressure antigen retrieval performed with 0.01M Tris-EDTA Buffer(pH 9.0) prior to IHC staining.



Immunohistochemistry analysis of paraffin-embedded Human lung squamous carcinoma tissue using CDK1/2 Rabbit PolymAb® (A26696PM) at a dilution of 1:200 (40x lens). High pressure antigen retrieval performed with 0.01M Tris-EDTA Buffer(pH 9.0) prior to IHC staining.

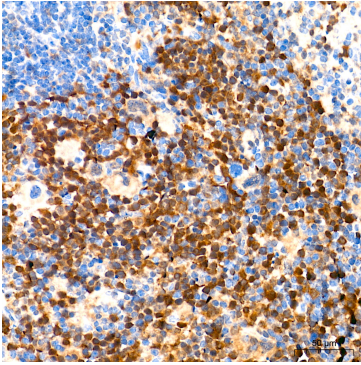


Immunohistochemistry analysis of paraffin-embedded Human tonsil tissue using CDK1/2 Rabbit PolymAb® (A26696PM) at a dilution of 1:200 (40x lens). High pressure antigen retrieval performed with 0.01M Tris-EDTA Buffer(pH 9.0) prior to IHC staining.

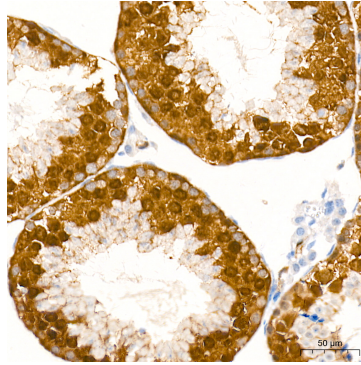


Immunohistochemistry analysis of paraffin-embedded Mouse intestine tissue using CDK1/2 Rabbit PolymAb® (A26696PM) at a dilution of 1:2000 (40x lens). High pressure antigen retrieval performed with 0.01M Tris-EDTA Buffer(pH 9.0) prior to IHC staining.

Validation Data



Immunohistochemistry analysis of paraffin-embedded Mouse spleen tissue using CDK1/2 Rabbit PolymAb® (A26696PM) at a dilution of 1:2000 (40x lens). High pressure antigen retrieval performed with 0.01M Tris-EDTA Buffer(pH 9.0) prior to IHC staining.



Immunohistochemistry analysis of paraffin-embedded Mouse testis tissue using CDK1/2 Rabbit PolymAb® (A26696PM) at a dilution of 1:2000 (40x lens). High pressure antigen retrieval performed with 0.01M Tris-EDTA Buffer(pH 9.0) prior to IHC staining.