

[KD Validated] SREBF1 Rabbit mAb

Catalog No.: A26708 **Recombinant** **1 Publications**

Basic Information

Observed MW

68 kDa/125 kDa

Calculated MW

120 kDa

Category

Primary antibody

Applications

WB,IHC-P,ELISA

Cross-Reactivity

Human

CloneNo number

ARC70394

Background

This gene encodes a transcription factor that binds to the sterol regulatory element-1 (SRE1), which is a decamer flanking the low density lipoprotein receptor gene and some genes involved in sterol biosynthesis. The protein is synthesized as a precursor that is attached to the nuclear membrane and endoplasmic reticulum. Following cleavage, the mature protein translocates to the nucleus and activates transcription by binding to the SRE1. Sterols inhibit the cleavage of the precursor, and the mature nuclear form is rapidly catabolized, thereby reducing transcription. The protein is a member of the basic helix-loop-helix-leucine zipper (bHLH-Zip) transcription factor family. Alternatively spliced transcript variants have been characterized for this gene.

Recommended Dilutions

WB 1:1000 - 1:10000

IHC-P 1:200 - 1:800

ELISA Recommended starting concentration is 1 µg/mL. Please optimize the concentration based on your specific assay requirements.

Immunogen Information

Gene ID

20787

Swiss Prot

Q9WTN3

Immunogen

Synthetic peptide. This information is considered to be commercially sensitive.

Synonyms

ADD1; SREBP1; bHLHd1

Contact

☎ | 400-999-6126

✉ | cn.market@abclonal.com.cn

🌐 | www.abclonal.com.cn

Product Information

Source

Rabbit

Isotype

IgG

Purification

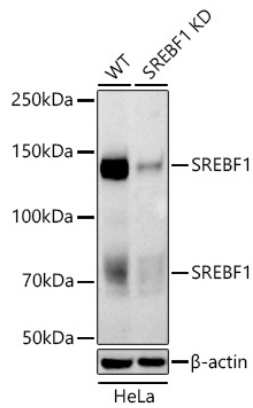
Affinity purification

Storage

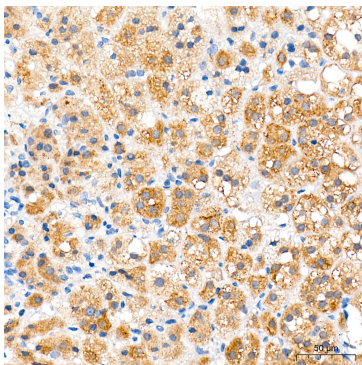
Store at -20°C. Avoid freeze / thaw cycles.

Buffer: PBS with 0.09% Sodium azide,0.05% BSA,50% glycerol,pH7.3.

Validation Data



Western blot analysis of lysates from wild type (WT) and SREBF1 knockdown (KD) HeLa cells using [KD Validated] SREBF1 Rabbit mAb (A26708) at 1:5000 dilution incubated overnight at 4°C. Secondary antibody: HRP-conjugated Goat anti-Rabbit IgG (H+L) (AS014) at 1:10000 dilution. Lysates/proteins: 25 µg per lane. Blocking buffer: 3% nonfat dry milk in TBST. Detection: ECL Basic Kit (RM00020). Exposure time: 90 s.



Immunohistochemistry analysis of paraffin-embedded Human adrenal gland tissue using [KD Validated] SREBF1 Rabbit mAb (A26708) at a dilution of 1:200 (40x lens). High pressure antigen retrieval performed with 0.01M Tris-EDTA Buffer(pH 9.0) prior to IHC staining.