

# PE Rabbit anti-Mouse CD88/C5aR mAb

Catalog No.: A26709

## Basic Information

### Observed MW

### Calculated MW

39kDa

### Category

Primary antibody

### Applications

FC

### Cross-Reactivity

Mouse

### CloneNo number

ARC69412

### Conjugate

PE. Ex:565nm. Em:574nm.

## Recommended Dilutions

FC 5  $\mu$ l per  $10^6$  cells in  
100  $\mu$ l volume

## Background

Enables complement component C5a receptor activity. Involved in several processes, including astrocyte activation; positive regulation of vascular endothelial growth factor production; and regulation of granulocyte chemotaxis. Acts upstream of or within defense response to Gram-positive bacterium; neutrophil chemotaxis; and response to peptidoglycan. Predicted to be located in several cellular components, including apical part of cell; basolateral plasma membrane; and cell surface. Predicted to be active in plasma membrane. Is expressed in several structures, including brain; liver; neural ectoderm; and sensory organ. Orthologous to several human genes including OPRPN (opiorphin prepropeptide).

## Immunogen Information

### Gene ID

12273

### Swiss Prot

P30993

### Immunogen

Recombinant protein (or fragment). This information is considered to be commercially sensitive.

### Synonyms

C5aR; C5r1; Cd88; D7Msu1

## Contact

☎ | 400-999-6126

✉ | [cn.market@abclonal.com.cn](mailto:cn.market@abclonal.com.cn)

🌐 | [www.abclonal.com.cn](http://www.abclonal.com.cn)

## Product Information

### Source

Rabbit

### Isotype

IgG

### Purification

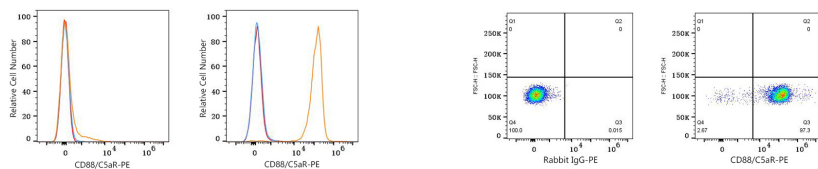
Affinity purification

### Storage

Store at 2-8°C. Avoid freeze.

Buffer: PBS with 0.09% Sodium azide, 0.2% BSA, pH7.3.

## Validation Data



Flow cytometry:  $1 \times 10^6$  C57BL/6 mouse splenocytes (negative control, left) and C57BL/6 mouse bone marrow cells (right) were surface-stained with PE Rabbit anti-Mouse CD88/C5aR mAb (A26709,5  $\mu$ l/Test, orange line) or PE Rabbit IgG isotype control (A24172,5  $\mu$ l/Test, blue line). Non-fluorescently stained cells were used as blank control (red line).

Flow cytometry:  $1 \times 10^6$  mouse bone marrow cells were surface-stained with PE Rabbit IgG isotype control (A24172,5  $\mu$ l/Test, left) or PE Rabbit anti-Mouse CD88/C5aR mAb (A26709,5  $\mu$ l/Test, right).