

ABflo® 488 Rabbit anti-Human CaSR mAb

Catalog No.: A26713

Basic Information

Observed MW

Calculated MW

121kDa

Category

Primary antibody

Applications

FC

Cross-Reactivity

Human

CloneNo number

ARC69622

Conjugate

ABflo® 488. Ex:491nm. Em:516nm.

Background

The protein encoded by this gene is a plasma membrane G protein-coupled receptor that senses small changes in circulating calcium concentration. The encoded protein couples this information to intracellular signaling pathways that modify parathyroid hormone secretion or renal cation handling, and thus this protein plays an essential role in maintaining mineral ion homeostasis. Mutations in this gene are a cause of familial hypocalciuric hypercalcemia, neonatal severe hyperparathyroidism, and autosomal dominant hypocalcemia.

Recommended Dilutions

FC 5 µl per 10⁶ cells in
100 µl volume

Immunogen Information

Gene ID

846

Swiss Prot

P41180

Immunogen

Synthetic peptide. This information is considered to be commercially sensitive.

Synonyms

CAR; FHH; FIH; HHC; EIG8; HHC1; NSHPT; PCAR1; hCasR; GPRC2A; HYPOC1

Contact

☎ | 400-999-6126

✉ | cn.market@abclonal.com.cn

🌐 | www.abclonal.com.cn

Product Information

Source

Rabbit

Isotype

IgG

Purification

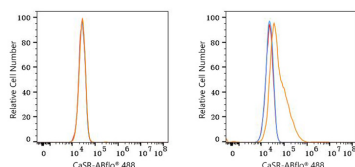
Affinity purification

Storage

Store at 2-8°C. Avoid freeze.

Buffer: PBS with 0.09% Sodium azide, 0.2% BSA, pH7.3.

Validation Data



Flow cytometry: 1×10^6 293T cells (negative control, left) and 293T (Transfection, right) cells were surface-stained with ABflo® 488 Rabbit anti-Human CaSR mAb (A26713, 5 µl/Test, orange line) or ABflo® 488 Rabbit IgG isotype control (A22069, 5 µl/Test, blue line). Non-fluorescently stained cells were used as blank control (red line).