

PE Rabbit anti-Mouse CD62L mAb

Catalog No.: A26715

Basic Information

Observed MW

Calculated MW

42kDa

Category

Primary antibody

Applications

FC

Cross-Reactivity

Mouse

CloneNo number

ARC69898

Conjugate

PE. Ex:565nm. Em:574nm.

Background

Enables cell adhesion molecule binding activity. Acts upstream of or within response to ATP. Located in external side of plasma membrane. Is expressed in brain; brainstem; submandibular gland epithelium; and testis. Used to study type 1 diabetes mellitus. Human ortholog(s) of this gene implicated in Crohn's disease; IgA glomerulonephritis; and ulcerative colitis. Orthologous to human SELL (selectin L).

Recommended Dilutions

FC 5 µl per 10⁶ cells in
100 µl volume

Immunogen Information

Gene ID

20343

Swiss Prot

P18337

Immunogen

Recombinant protein (or fragment). This information is considered to be commercially sensitive.

Synonyms

Lnh; CD62L; LAM-1; Ly-22; Lyam1; LECAM1; Ly-m22; Lyam-1; LECAM-1; L-selectin

Contact

☎ | 400-999-6126

✉ | cn.market@abclonal.com.cn

🌐 | www.abclonal.com.cn

Product Information

Source

Rabbit

Isotype

IgG

Purification

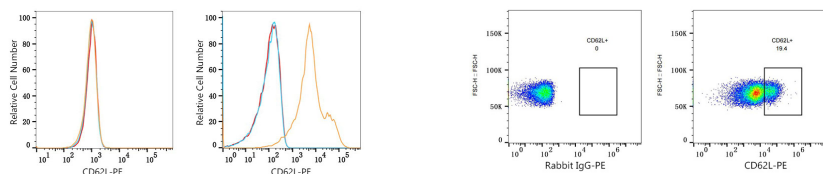
Affinity purification

Storage

Store at 2-8°C. Avoid freeze.

Buffer: PBS with 0.09% Sodium azide, 0.2% BSA, pH7.3.

Validation Data



Flow cytometry: 1×10^6 NIH/3T3 cells (negative control, left) and C57BL/6 mouse splenocytes (right) were surface-stained with PE Rabbit anti-Mouse CD62L mAb (A26715, 5 μ l/Test, orange line) or PE Rabbit IgG isotype control (A24172, 5 μ l/Test, blue line). Non-fluorescently stained cells were used as blank control (red line).

Flow cytometry: 1×10^6 C57BL/6 mouse splenocytes were surface-stained with PE Rabbit IgG isotype control (A24172, 5 μ l/Test, left) or PE Rabbit anti-Mouse CD62L mAb (A26715, 5 μ l/Test, right).