

# PE Rabbit anti-Mouse Ly-49D mAb

Catalog No.: A26717

## Basic Information

### Observed MW

### Calculated MW

31kDa

### Category

Primary antibody

### Applications

FC

### Cross-Reactivity

Mouse

### CloneNo number

ARC69648

### Conjugate

PE. Ex:565nm. Em:574nm.

## Background

Predicted to enable carbohydrate binding activity. Predicted to act upstream of or within cell adhesion. Located in external side of plasma membrane.

## Recommended Dilutions

FC 5  $\mu$ l per  $10^6$  cells in  
100  $\mu$ l volume

## Immunogen Information

### Gene ID

16635

### Swiss Prot

Q60651

### Immunogen

Recombinant protein (or fragment). This information is considered to be commercially sensitive.

### Synonyms

Chok; Ly49d; Klra32; Klra33; Ly-49d; ly49r<129>

## Contact

 | 400-999-6126

 | [cn.market@abclonal.com.cn](mailto:cn.market@abclonal.com.cn)

 | [www.abclonal.com.cn](http://www.abclonal.com.cn)

## Product Information

### Source

Rabbit

### Isotype

IgG

### Purification

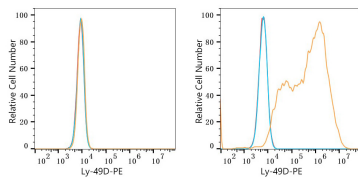
Affinity purification

### Storage

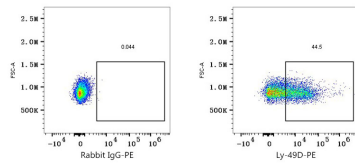
Store at 2-8°C. Avoid freeze.

Buffer: PBS with 0.09% Sodium azide, 0.2% BSA, pH7.3.

## Validation Data



Flow cytometry:  $1 \times 10^6$  293T cells (negative control, left) and 293T (Transfection, right) cells were surface-stained with PE Rabbit anti-Mouse Ly-49D mAb (A26717,5  $\mu$ l/Test, orange line) or PE Rabbit IgG isotype control (A24172,5  $\mu$ l/Test, blue line). Non-fluorescently stained cells were used as blank control (red line).



Flow cytometry:  $1 \times 10^6$  C57BL/6 mouse splenocytes were surface-stained with PE Rabbit IgG isotype control (A24172,5  $\mu$ l/Test, left) or PE Rabbit anti-Mouse Ly-49D mAb (A26717,5  $\mu$ l/Test, right).