

ABflo® 488 Rabbit anti-Mouse Ly-49D mAb

Catalog No.: A26718

Basic Information

Observed MW

Calculated MW

31kDa

Category

Primary antibody

Applications

FC

Cross-Reactivity

Mouse

CloneNo number

ARC69648

Conjugate

ABflo® 488. Ex:491nm. Em:516nm.

Recommended Dilutions

FC 5 µl per 10⁶ cells in
100 µl volume

Background

Predicted to enable carbohydrate binding activity. Predicted to act upstream of or within cell adhesion. Located in external side of plasma membrane.

Immunogen Information

Gene ID

16635

Swiss Prot

Q60651

Immunogen

Recombinant protein (or fragment). This information is considered to be commercially sensitive.

Synonyms

Chok; Ly49d; Klra32; Klra33; Ly-49d; ly49r<129>

Contact

 | 400-999-6126

 | cn.market@abclonal.com.cn

 | www.abclonal.com.cn

Product Information

Source

Rabbit

Isotype

IgG

Purification

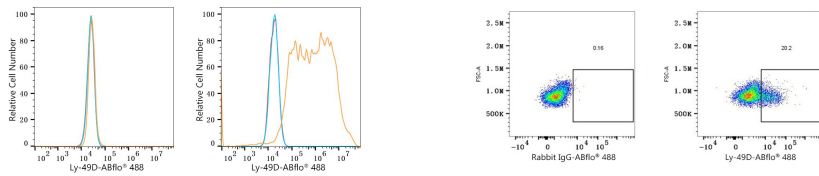
Affinity purification

Storage

Store at 2-8°C. Avoid freeze.

Buffer: PBS with 0.09% Sodium azide, 0.2% BSA, pH7.3.

Validation Data



Flow cytometry: 1×10^6 293T cells (negative control, left) and 293T (Transfection, right) cells were surface-stained with ABflo® 488 Rabbit anti-Mouse Ly-49D mAb (A26718, 5 μ l/Test, orange line) or ABflo® 488 Rabbit IgG isotype control (A22069, 5 μ l/Test, blue line). Non-fluorescently stained cells were used as blank control (red line).

Flow cytometry: 1×10^6 C57BL/6 mouse splenocytes were surface-stained with ABflo® 488 Rabbit IgG isotype control (A22069, 5 μ l/Test, left) or ABflo® 488 Rabbit anti-Mouse Ly-49D mAb (A26718, 5 μ l/Test, right).