

ABflo® 647 Rabbit anti-Mouse Ly-49D mAb

Catalog No.: A26719

Basic Information

Observed MW

Calculated MW

31kDa

Category

Primary antibody

Applications

FC

Cross-Reactivity

Mouse

CloneNo number

ARC69648-ABflo647

Conjugate

ABflo® 647. Ex:648nm. Em:664nm.

Background

Predicted to enable carbohydrate binding activity. Predicted to act upstream of or within cell adhesion. Located in external side of plasma membrane.

Recommended Dilutions

FC 5 µl per 10⁶ cells in
100 µl volume

Immunogen Information

Gene ID

16635

Swiss Prot

Q60651

Immunogen

Recombinant fusion protein containing a sequence corresponding to amino acids 66-263 of mouse Ly-49D (NP_001239506.1).

Synonyms

Chok; Ly49d; Klra32; Klra33; Ly-49d; ly49r<129>

Contact

☎ | 400-999-6126

✉ | cn.market@abclonal.com.cn

🌐 | www.abclonal.com.cn

Product Information

Source

Rabbit

Isotype

IgG

Purification

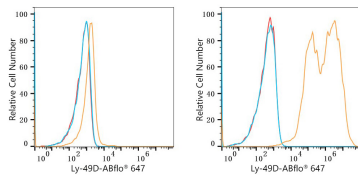
Affinity purification

Storage

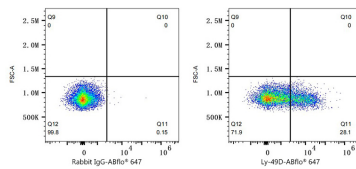
Store at 2-8°C. Avoid freeze.

Buffer: PBS with 0.09% Sodium azide, 0.2% BSA, pH7.3.

Validation Data



Flow cytometry: 1×10^6 293T cells (negative control, left) and 293T cells (right) were surface-stained with ABflo® 647 Rabbit anti-Mouse Ly-49D mAb (A26719,5 μ l/Test, orange line) or ABflo® 647 Rabbit IgG isotype control (A22070,5 μ l/Test, blue line). Non-fluorescently stained cells were used as blank control (red line).



Flow cytometry: 1×10^6 C57BL/6 mouse splenocytes were surface-stained with ABflo® 647 Rabbit IgG isotype control (A22070,5 μ l/Test, left) or ABflo® 647 Rabbit anti-Mouse Ly-49D mAb (A26719,5 μ l/Test, right).