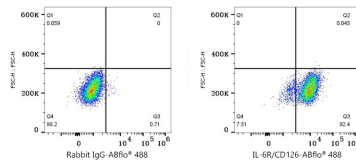
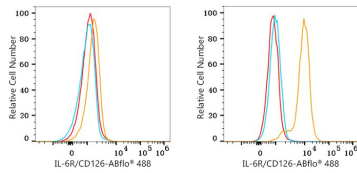




## Validation Data



Flow cytometry: 1X10<sup>6</sup> HeLa cells (negative control, left) and U266 cells (right) were intracellularly-stained with ABflo® 488 Rabbit anti-Human IL-6R/CD126 mAb (A26723, 2 µg/mL, orange line) or ABflo® 488 Rabbit IgG isotype control (A22069, 5 µl/Test, blue line). Non-fluorescently stained cells were used as blank control (red line).

Flow cytometry: 1X10<sup>6</sup> U266 cells were intracellularly-stained with ABflo® 488 Rabbit IgG isotype control (A22069, 5 µl/Test, left) or ABflo® 488 Rabbit anti-Human IL-6R/CD126 mAb (A26723, 5 µl/Test, right).