

ABflo® 647 Rabbit anti-Human GSK3β mAb

Catalog No.: A26726

Basic Information

Observed MW

GSK3B; glycogen synthase kinase-3 beta; GSK3β

Calculated MW

47kDa

Category

Primary antibody

Applications

FC (intra)

Cross-Reactivity

Human

CloneNo number

ARC70827-ABflo647

Conjugate

ABflo® 647. Ex:648nm. Em:664nm.

Recommended Dilutions

FC (intra) 5 μl per 10⁶ cells in
100 μl volume

Background

The protein encoded by this gene is a serine-threonine kinase belonging to the glycogen synthase kinase subfamily. It is a negative regulator of glucose homeostasis and is involved in energy metabolism, inflammation, ER-stress, mitochondrial dysfunction, and apoptotic pathways. Defects in this gene have been associated with Parkinson disease and Alzheimer disease.

Immunogen Information

Gene ID

2932

Swiss Prot

P49841

Immunogen

A synthetic peptide corresponding to a sequence within amino acids 321-420 of human GSK3β (NP_001139628.1).

Synonyms

GSK3B

Contact

 | 400-999-6126

 | cn.market@abclonal.com.cn

 | www.abclonal.com.cn

Product Information

Source

Rabbit

Isotype

IgG

Purification

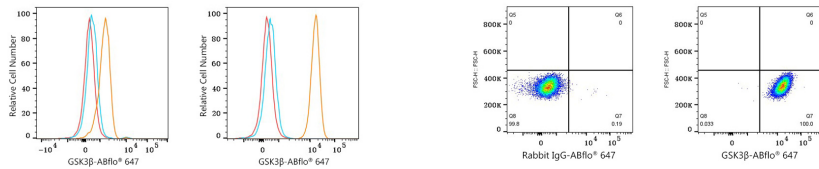
Affinity purification

Storage

Store at 2-8°C. Avoid freeze.

Buffer: PBS with 0.09% Sodium azide, 0.2% BSA, pH7.3.

Validation Data



Flow cytometry: 1X10⁶ knockout (KO) HeLa cells (negative control, left) and HeLa cells (right) were intracellularly-stained with ABflo® 647 Rabbit anti-Human GSK3β mAb (A26726, 5 μl/Test, orange line) or ABflo® 647 Rabbit IgG isotype control (A22070, 5 μl/Test, blue line). Non-fluorescently stained cells were used as blank control (red line).

Flow cytometry: 1X10⁶ HeLa cells were intracellularly-stained with ABflo® 647 Rabbit IgG isotype control (A22070, 5 μl/Test, left) or ABflo® 647 Rabbit anti-Human GSK3β mAb (A26726, 5 μl/Test, right).