

ABflo® 610 Rabbit anti-Human VCAM-1/CD106 mAb

Catalog No.: A26728

Basic Information

Observed MW

Calculated MW

71kDa/74kDa/81kDa

Category

Primary antibody

Applications

FC

Cross-Reactivity

Human

CloneNo number

ARC60068

Conjugate

ABflo® 610. Ex:421nm. Em:612nm.

Background

This gene is a member of the Ig superfamily and encodes a cell surface sialoglycoprotein expressed by cytokine-activated endothelium. This type I membrane protein mediates leukocyte-endothelial cell adhesion and signal transduction, and may play a role in the development of atherosclerosis and rheumatoid arthritis. Three alternatively spliced transcripts encoding different isoforms have been described for this gene.

Recommended Dilutions

FC 5 µl per 10⁶ cells in
100 µl volume

Immunogen Information

Gene ID

7412

Swiss Prot

P19320

Immunogen

Recombinant protein (or fragment). This information is considered to be commercially sensitive.

Synonyms

CD106; INCAM-100

Contact

 | 400-999-6126

 | cn.market@abclonal.com.cn

 | www.abclonal.com.cn

Product Information

Source

Rabbit

Isotype

IgG

Purification

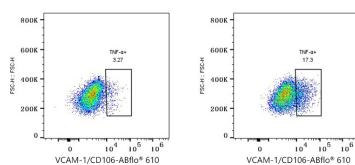
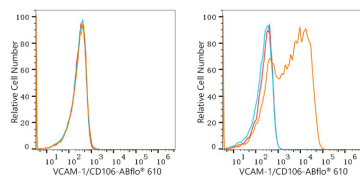
Affinity purification

Storage

Store at 2-8°C. Avoid freeze.

Buffer: PBS with 0.09% Sodium azide, 0.2% BSA, pH7.3.

Validation Data



Flow cytometry: 1X10⁶ 293T cells (negative control, left) and 293T (Transfection, right) cells were surface-stained with ABflo® 610 Rabbit anti-Human VCAM-1/CD106 mAb (A26728, 5 µl/Test, orange line) or ABflo® 610 Rabbit IgG isotype control (A25826, 5 µl/Test, blue line). Non-fluorescently stained cells were used as blank control (red line).

Flow cytometry: 1X10⁶ HUVEC cells (untreated, left) and HUVEC cells (treated with 10 ng/ml TNF-α for 16 hours, right) were surface-stained with ABflo® 610 Rabbit anti-Human VCAM-1/CD106 mAb (A26728, 5 µl/Test).