

ABflo® 450 Rabbit anti-Human CD22 mAb

Catalog No.: A26732

Basic Information

Observed MW

Calculated MW

95kDa

Category

Primary antibody

Applications

FC

Cross-Reactivity

Human

CloneNo number

ARC59252-ABflo450

Conjugate

ABflo® 450. Ex:406nm. Em:445nm.

Background

Predicted to enable CD4 receptor binding activity; protein phosphatase binding activity; and sialic acid binding activity. Involved in B cell activation; negative regulation of B cell receptor signaling pathway; and regulation of endocytosis. Located in early endosome and recycling endosome.

Recommended Dilutions

FC 5 µl per 10⁶ cells in
100 µl volume

Immunogen Information

Gene ID

933

Swiss Prot

P20273

Immunogen

Recombinant fusion protein containing a sequence corresponding to amino acids 20-687 of human CD22 (NP_001762.2).

Synonyms

SIGLEC2; SIGLEC-2

Contact

☎ | 400-999-6126

✉ | cn.market@abclonal.com.cn

🌐 | www.abclonal.com.cn

Product Information

Source

Rabbit

Isotype

IgG

Purification

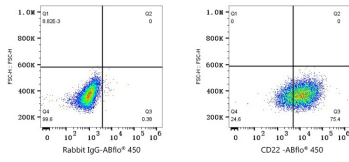
Affinity purification

Storage

Store at 2-8°C. Avoid freeze.

Buffer: PBS with 0.09% Sodium azide, 0.2% BSA, pH7.3.

Validation Data



Flow cytometry: 1×10^6 Daudi cells were surface-stained with ABflo® 450 Rabbit IgG isotype control (5 μ l/Test, left) or ABflo® 450 Rabbit anti-Human CD22 mAb (A26732, 5 μ l/Test, right).