

# ABflo® 610 Rabbit anti-Human CD22 mAb

Catalog No.: A26733

## Basic Information

### Observed MW

### Calculated MW

95kDa

### Category

Primary antibody

### Applications

FC

### Cross-Reactivity

Human

### CloneNo number

ARC59252-ABflo610

### Conjugate

ABflo® 610. Ex:421nm. Em:612nm.

## Background

Predicted to enable CD4 receptor binding activity; protein phosphatase binding activity; and sialic acid binding activity. Involved in B cell activation; negative regulation of B cell receptor signaling pathway; and regulation of endocytosis. Located in early endosome and recycling endosome.

## Recommended Dilutions

FC 5 µl per 10<sup>6</sup> cells in  
100 µl volume

## Immunogen Information

### Gene ID

933

### Swiss Prot

P20273

### Immunogen

Recombinant fusion protein containing a sequence corresponding to amino acids 20-687 of human CD22 (NP\_001762.2).

### Synonyms

SIGLEC2; SIGLEC-2

## Contact

☎ | 400-999-6126

✉ | [cn.market@abclonal.com.cn](mailto:cn.market@abclonal.com.cn)

🌐 | [www.abclonal.com.cn](http://www.abclonal.com.cn)

## Product Information

### Source

Rabbit

### Isotype

IgG

### Purification

Affinity purification

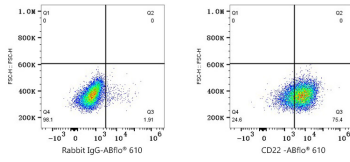
### Storage

Store at 2-8°C. Avoid freeze.

Buffer: PBS with 0.09% Sodium azide, 0.2% BSA, pH7.3.

## Validation Data

---



Flow cytometry:  $1 \times 10^6$  Daudi cells were surface-stained with ABflo® 610 Rabbit IgG isotype control (A25826, 5  $\mu$ l/Test, left) or ABflo® 610 Rabbit anti-Human CD22 mAb (A26733, 5  $\mu$ l/Test, right).