

PE Rabbit anti-Mouse CD80/B7-1 mAb

Catalog No.: A26740

Basic Information

Observed MW

Calculated MW

34kDa

Category

Primary antibody

Applications

FC

Cross-Reactivity

Mouse

CloneNo number

ARC61485

Conjugate

PE. Ex:565nm. Em:574nm.

Background

Predicted to enable coreceptor activity. Acts upstream of or within T cell costimulation; cellular response to lipopolysaccharide; and positive regulation of alpha-beta T cell proliferation. Located in external side of plasma membrane. Is expressed in heart ventricle and skin. Human ortholog(s) of this gene implicated in type 1 diabetes mellitus. Orthologous to human CD80 (CD80 molecule).

Recommended Dilutions

FC 5 μ l per 10^6 cells in
100 μ l volume

Immunogen Information

Gene ID

12519

Swiss Prot

Q00609

Immunogen

Recombinant protein (or fragment). This information is considered to be commercially sensitive.

Synonyms

B71; Ly53; TSA1; Cd28l; Ly-53; MIC17

Contact

☎ | 400-999-6126

✉ | cn.market@abclonal.com.cn

🌐 | www.abclonal.com.cn

Product Information

Source

Rabbit

Isotype

IgG

Purification

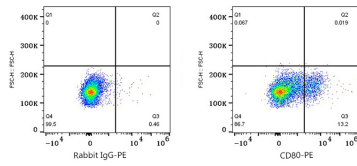
Affinity purification

Storage

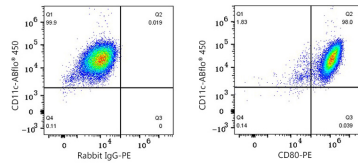
Store at 2-8°C. Avoid freeze.

Buffer: PBS with 0.09% Sodium azide, 0.2% BSA, pH7.3.

Validation Data



Flow cytometry: 1×10^6 Rat splenocytes were surface-stained with PE Rabbit IgG isotype control (A24172, 5 μ l/Test, left) or PE Rabbit anti-Mouse CD80 mAb (A26740, 5 μ l/Test, right).



Flow cytometry: 1×10^6 C57BL/6 mouse Bone Marrow-derived Dendritic Cells were surface-stained with ABflo® 450 anti-Mouse CD11c mAb (A27804, 0.5 μ g) and PE Rabbit IgG isotype control (A24172, 5 μ l/Test, left) or PE Rabbit anti-Mouse CD80 mAb (A26740, 5 μ l/Test, right).