

MAG Rabbit mAb

Catalog No.: A26750 **Recombinant**

Basic Information

Observed MW

100kDa

Calculated MW

69kDa

Category

Primary antibody

Applications

WB,IF-F,IHC-P,IP,ELISA

Cross-Reactivity

Human, Mouse, Rat

CloneNo number

ARC3307

Background

The protein encoded by this gene is a type I membrane protein and member of the immunoglobulin superfamily. It is thought to be involved in the process of myelination. It is a lectin that binds to sialylated glycoconjugates and mediates certain myelin-neuron cell-cell interactions. Three alternatively spliced transcripts encoding different isoforms have been described for this gene.

Recommended Dilutions

WB	1:1000 - 1:4000
IF-F	1:200 - 1:400
IHC-P	1:200 - 1:800
IP	0.5µg-4µg antibody for 500µg-700µg extracts of whole cells
ELISA	Recommended starting concentration is 1 µg/mL. Please optimize the concentration based on your specific assay requirements.

Contact

☎ | 400-999-6126

✉ | cn.market@abclonal.com.cn

🌐 | www.abclonal.com.cn

Immunogen Information

Gene ID

4099

Swiss Prot

P20916

Immunogen

Recombinant protein (or fragment). This information is considered to be commercially sensitive.

Synonyms

GMA; S-MAG; SPG75; SIGLEC4A; SIGLEC-4A

Product Information

Source

Rabbit

Isotype

IgG

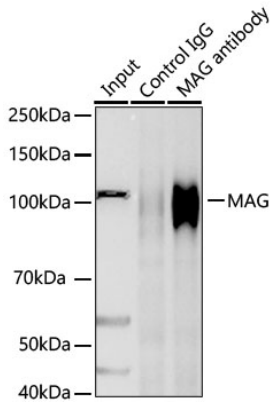
Purification

Affinity purification

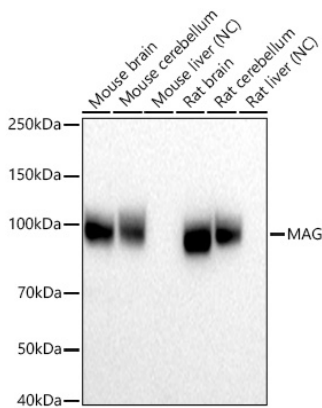
Storage

Store at -20°C. Avoid freeze / thaw cycles.
Buffer: PBS with 0.05% BSA, 40% glycerol, pH7.3.

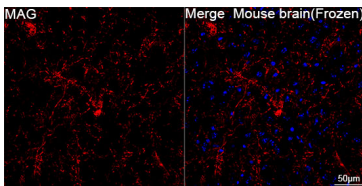
Validation Data



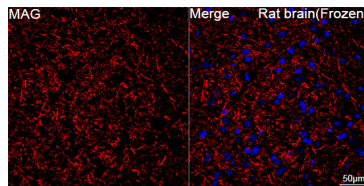
Immunoprecipitation of MAG from 600 μ g extracts of Mouse brain was performed using 2 μ g of MAG Rabbit mAb (A26750). Rabbit IgG isotype control (AC042) was used to precipitate the Control IgG sample. IP samples were eluted with 1X reducing Laemmli Buffer. The Input lane represents 10% of the total input. Western blot analysis of immunoprecipitates was conducted using MAG Rabbit mAb (A9671) at a dilution of 1:1000.



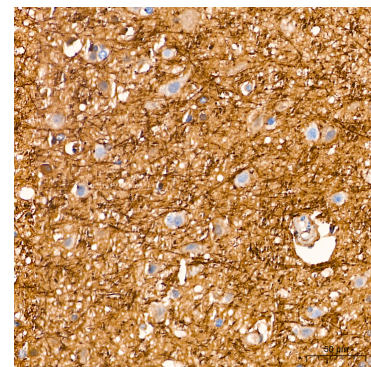
Western blot analysis of various lysates using MAG Rabbit mAb (A26750) at 1:1000 dilution incubated overnight at 4°C. Secondary antibody: HRP-conjugated Goat anti-Rabbit IgG (H+L) (AS014) at 1:10000 dilution. Lysates/proteins: 25 μ g per lane. Blocking buffer: 3% nonfat dry milk in TBST. Detection: ECL Basic Kit (RM00020). Negative control (NC): Mouse liver, Rat liver. Exposure time: 20s.



Confocal imaging of frozen sections Mouse brain tissue using MAG Rabbit mAb (A26750, dilution 1:200) followed by a further incubation with Cy3-conjugated Goat Anti-Rabbit IgG (H+L) (AS007, dilution 1:500) (Red). DAPI was used for nuclear staining (Blue). Objective: 40x.

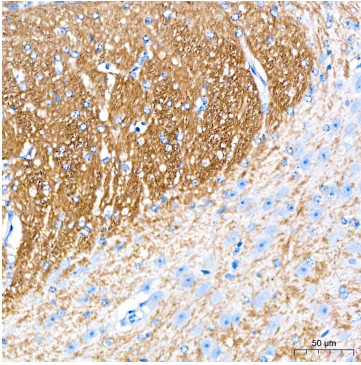


Confocal imaging of frozen sections Rat brain tissue using MAG Rabbit mAb (A26750, dilution 1:200) followed by a further incubation with Cy3-conjugated Goat Anti-Rabbit IgG (H+L) (AS007, dilution 1:500) (Red). DAPI was used for nuclear staining (Blue). Objective: 40x.

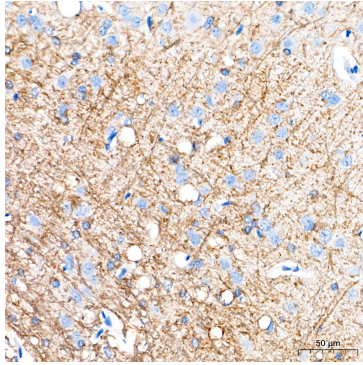


Immunohistochemistry analysis of paraffin-embedded Human brain tissue using MAG Rabbit mAb (A26750) at a dilution of 1:200 (40x lens). High pressure antigen retrieval performed with 0.01M Citrate Buffer (pH 6.0) prior to IHC staining.

Validation Data



Immunohistochemistry analysis of paraffin-embedded Mouse brain tissue using MAG Rabbit mAb (A26750) at a dilution of 1:200 (40x lens). High pressure antigen retrieval performed with 0.01M Citrate Buffer (pH 6.0) prior to IHC staining.



Immunohistochemistry analysis of paraffin-embedded Rat brain tissue using MAG Rabbit mAb (A26750) at a dilution of 1:200 (40x lens). High pressure antigen retrieval performed with 0.01M Citrate Buffer (pH 6.0) prior to IHC staining.