

ABflo® 488 Rabbit anti-Mouse CXCR2/IL-8RB mAb

Catalog No.: A26757

Basic Information

Observed MW

Calculated MW

40kDa

Category

Primary antibody

Applications

FC

Cross-Reactivity

Mouse

CloneNo number

ARC65373-ABflo488

Conjugate

ABflo® 488. Ex:491nm. Em:516nm.

Recommended Dilutions

FC 5 µl per 10⁶ cells in
100 µl volume

Background

Enables chemokine receptor activity. Acts upstream of or within negative regulation of apoptotic process. Predicted to be located in several cellular components, including cell surface; mast cell granule; and mitotic spindle. Predicted to be active in external side of plasma membrane. Is expressed in several structures, including alimentary system; central nervous system; embryo mesenchyme; epithelium; and heart. Human ortholog(s) of this gene implicated in IgA glomerulonephritis; acute pyelonephritis; end stage renal disease; and urinary bladder cancer. Orthologous to human CXCR2 (C-X-C motif chemokine receptor 2).

Immunogen Information

Gene ID

12765

Swiss Prot

P35343

Immunogen

Recombinant fusion protein containing a sequence corresponding to amino acids 1-44 of mouse CXCR2/IL-8RB (NP_034039.1).

Synonyms

CD128; IL8RA; Il8rb; CDw128; Cmkar2; Gpcr16; IL-8Rh; IL-8rb; mIL-8RH

Contact

☎ | 400-999-6126

✉ | cn.market@abclonal.com.cn

🌐 | www.abclonal.com.cn

Product Information

Source

Rabbit

Isotype

IgG

Purification

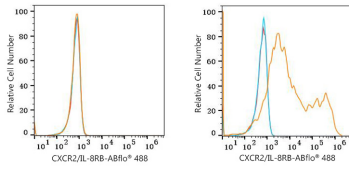
Affinity purification

Storage

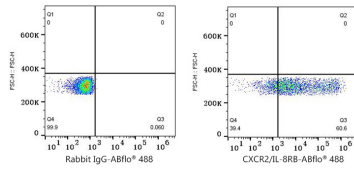
Store at 2-8°C. Avoid freeze.

Buffer: PBS with 0.09% Sodium azide,0.2% BSA,pH7.3.

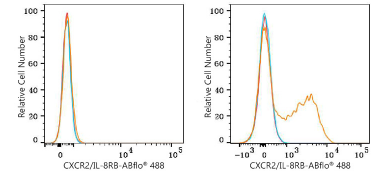
Validation Data



Flow cytometry: 1×10^6 293T cells (negative control, left) and 293T (Transfection, right) cells were surface-stained with ABflo® 488 Rabbit anti-Mouse CXCR2/IL-8RB mAb (A26757,5 μ l/Test, orange line) or ABflo® 488 Rabbit IgG isotype control (A22069,5 μ l/Test, blue line). Non-fluorescently stained cells were used as blank control (red line).



Flow cytometry: 1×10^6 293T (Transfection) cells were surface-stained with ABflo® 488 Rabbit IgG isotype control (A22069,5 μ l/Test, left) or ABflo® 488 Rabbit anti-Mouse CXCR2/IL-8RB mAb (A26757,5 μ l/Test, right).



Flow cytometry: 1×10^6 RAW264.7 cells (negative control, left) and C57BL/6 mouse bone marrow cells (right) were surface-stained with ABflo® 488 Rabbit anti-Mouse CXCR2/IL-8RB mAb (A26757,5 μ l/Test, orange line) or ABflo® 488 Rabbit IgG isotype control (A22069,5 μ l/Test, blue line). Non-fluorescently stained cells were used as blank control (red line).