

# PE Rabbit anti-Mouse CD28 mAb

Catalog No.: A26769

## Basic Information

### Observed MW

### Calculated MW

25kDa

### Category

Primary antibody

### Applications

FC

### Cross-Reactivity

Mouse

### CloneNo number

ARC63635

### Conjugate

PE. Ex:565nm. Em:574nm.

## Background

Enables protein kinase binding activity. Acts upstream of or within several processes, including positive regulation of immune response; positive regulation of intracellular signal transduction; and regulation of lymphocyte activation. Located in external side of plasma membrane and immunological synapse. Human ortholog(s) of this gene implicated in multiple sclerosis and type 1 diabetes mellitus. Orthologous to human CD28 (CD28 molecule).

## Recommended Dilutions

FC 5  $\mu$ l per  $10^6$  cells in  
100  $\mu$ l volume

## Immunogen Information

### Gene ID

12487

### Swiss Prot

P31041

### Immunogen

Recombinant protein (or fragment). This information is considered to be commercially sensitive.

### Synonyms

Cd28

## Contact

 | 400-999-6126

 | [cn.market@abclonal.com.cn](mailto:cn.market@abclonal.com.cn)

 | [www.abclonal.com.cn](http://www.abclonal.com.cn)

## Product Information

### Source

Rabbit

### Isotype

IgG

### Purification

Affinity purification

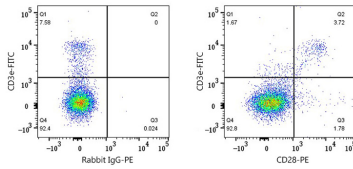
### Storage

Store at 2-8°C. Avoid freeze.

Buffer: PBS with 0.09% Sodium azide, 0.2% BSA, pH7.3.

## Validation Data

---



Flow cytometry:  $1 \times 10^6$  C57BL/6 splenocytes were surface-stained with FITC Anti-Mouse CD3e mAb, (A23322, 2  $\mu\text{g}/\text{mL}$ ) and PE Rabbit IgG isotype control (A24172, 5  $\mu\text{l}/\text{Test}$ , left) or PE Rabbit anti-Mouse CD28 mAb (A26769, 5  $\mu\text{l}/\text{Test}$ , right). Cells in the lymphocytes gate were used for analysis.