

PE Rabbit anti-Human Podoplanin mAb

Catalog No.: A26770

Basic Information

Observed MW

Calculated MW

17kDa

Category

Primary antibody

Applications

FC

Cross-Reactivity

Human

CloneNo number

ARC63004-PE

Conjugate

PE. Ex:565nm. Em:574nm.

Recommended Dilutions

FC 5 μ l per 10^6 cells in
100 μ l volume

Background

This gene encodes a type-I integral membrane glycoprotein with diverse distribution in human tissues. The physiological function of this protein may be related to its mucin-type character. The homologous protein in other species has been described as a differentiation antigen and influenza-virus receptor. The specific function of this protein has not been determined but it has been proposed as a marker of lung injury. Alternatively spliced transcript variants encoding different isoforms have been identified.

Immunogen Information

Gene ID

10630

Swiss Prot

Q86YL7

Immunogen

Recombinant fusion protein containing a sequence corresponding to amino acids 21-123 of Human Podoplanin (NP_006465.4).

Synonyms

T1A; GP36; GP40; Gp38; OTS8; T1A2; T11A; D2-40; T1A-2; AGGRUS; HT1A-1; PA2.26

Contact

 | 400-999-6126

 | cn.market@abclonal.com.cn

 | www.abclonal.com.cn

Product Information

Source

Rabbit

Isotype

IgG

Purification

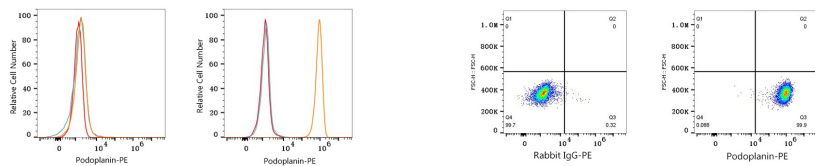
Affinity purification

Storage

Store at 2-8°C. Avoid freeze.

Buffer: PBS with 0.09% Sodium azide, 0.2% BSA, pH7.3.

Validation Data



Flow cytometry: 1×10^6 knockout (KO) 293T cells (negative control, left) and 293T (right) cells were surface-stained with PE Rabbit anti-Human Podoplanin mAb (A26770, 5 μ l/Test, orange line) or PE Rabbit IgG isotype control (A24172, 5 μ l/Test, blue line). Non-fluorescently stained cells were used as blank control (red line).

Flow cytometry: 1×10^6 293T cells were surface-stained with PE Rabbit IgG isotype control (A24172, 5 μ l/Test, left) or PE Rabbit anti-Human Podoplanin mAb (A26770, 5 μ l/Test, right).