

APC Rabbit anti-Human Podoplanin mAb

Catalog No.: A26771

Basic Information

Observed MW

Calculated MW

17kDa

Category

Primary antibody

Applications

FC

Cross-Reactivity

Human

CloneNo number

ARC63004

Conjugate

APC. Ex:650nm. Em:660nm.

Recommended Dilutions

FC 5 μ l per 10^6 cells in
100 μ l volume

Background

This gene encodes a type-I integral membrane glycoprotein with diverse distribution in human tissues. The physiological function of this protein may be related to its mucin-type character. The homologous protein in other species has been described as a differentiation antigen and influenza-virus receptor. The specific function of this protein has not been determined but it has been proposed as a marker of lung injury. Alternatively spliced transcript variants encoding different isoforms have been identified.

Immunogen Information

Gene ID

10630

Swiss Prot

Q86YL7

Immunogen

Recombinant protein (or fragment). This information is considered to be commercially sensitive.

Synonyms

T1A; GP36; GP40; Gp38; OTS8; T1A2; T11A; D2-40; T1A-2; AGGRUS; HT1A-1; PA2.26

Contact

☎ | 400-999-6126

✉ | cn.market@abclonal.com.cn

🌐 | www.abclonal.com.cn

Product Information

Source

Rabbit

Isotype

IgG

Purification

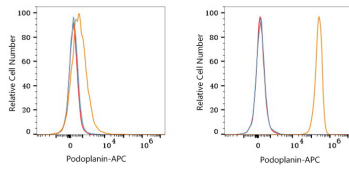
Affinity purification

Storage

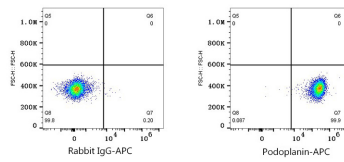
Store at 2-8°C. Avoid freeze.

Buffer: PBS with 0.09% Sodium azide, 0.2% BSA, pH7.3.

Validation Data



Flow cytometry: 1×10^6 knockout (KO) 293T cells (negative control, left) and 293T (right) cells were surface-stained with APC Rabbit anti-Human Podoplanin mAb (A26771, 5 $\mu\text{l}/\text{Test}$, orange line) or APC Rabbit IgG isotype control (A24173, 5 $\mu\text{l}/\text{Test}$, blue line). Non-fluorescently stained cells were used as blank control (red line).



Flow cytometry: 1×10^6 293T cells were surface-stained with APC Rabbit IgG isotype control (A24173, 5 $\mu\text{l}/\text{Test}$, left) or APC Rabbit anti-Human Podoplanin mAb (A26771, 5 $\mu\text{l}/\text{Test}$, right).