

ABflo® 647 Conjugated TOM20 Rabbit mAb

Catalog No.: A26784 **Recombinant**

Basic Information

Observed MW

16kDa

Calculated MW

16kDa

Category

Primary antibody

Applications

IF/ICC

Cross-Reactivity

Human, Mouse, Rat

CloneNo number

ARC5002-01-ABflo647

Conjugate

ABflo® 647. Ex:648nm. Em:664nm.

Recommended Dilutions

WB 1:5000 - 1:20000

IF/ICC 1:500 - 1:2000

Background

Enables protein-transporting ATPase activity and unfolded protein binding activity. Involved in protein targeting to mitochondrion. Located in mitochondria-associated endoplasmic reticulum membrane and mitochondrial outer membrane.

Immunogen Information

Gene ID

9804

Swiss Prot

Q15388

Immunogen

Recombinant fusion protein containing a sequence corresponding to amino acids 20-145 of human TOM20 (NP_055580.1).

Synonyms

MAS20; MOM19; TOM20

Contact

☎ | 400-999-6126

✉ | cn.market@abclonal.com.cn

🌐 | www.abclonal.com.cn

Product Information

Source

Rabbit

Isotype

IgG

Purification

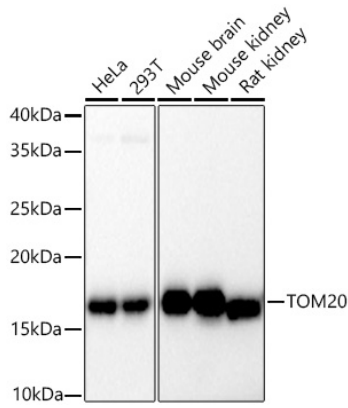
Affinity purification

Storage

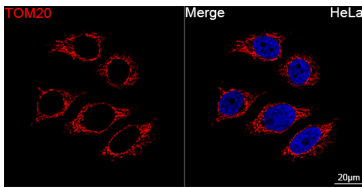
Store at 2-8°C. Avoid freeze.

Buffer: PBS with 0.09% Sodium azide, 0.2% BSA, pH7.3.

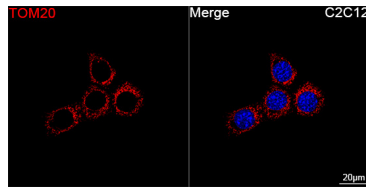
Validation Data



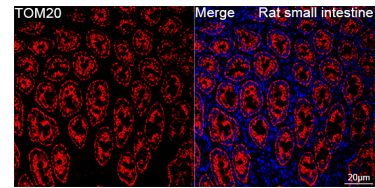
Western blot analysis of various lysates using ABflo® 647 Conjugated TOM20 Rabbit mAb (A26784) at 1:5000 dilution incubated overnight at 4°C. Secondary antibody: HRP-conjugated Goat anti-Rabbit IgG (H+L) (AS014) at 1:10000 dilution. Lysates/proteins: 25 µg per lane. Blocking buffer: 3% nonfat dry milk in TBST. Detection: ECL Basic Kit (RM00020). Exposure time: 30s.



Confocal imaging of HeLa cells using ABflo® 647 Conjugated TOM20 Rabbit mAb (A26784, dilution 1:1000). DAPI was used for nuclear staining (Blue). Objective: 100x.



Confocal imaging of C2C12 cells using ABflo® 647 Conjugated TOM20 Rabbit mAb (A26784, dilution 1:1000). DAPI was used for nuclear staining (Blue). Objective: 100x.



Confocal imaging of paraffin-embedded Rat small intestine tissue using ABflo® 647 Conjugated TOM20 Rabbit mAb (A26784, dilution 1:1000). DAPI was used for nuclear staining (Blue). High pressure antigen retrieval performed with 0.01M Citrate Buffer (pH 6.0) prior to IF staining. Objective: 40x.