

# ABflo® 488 anti-Mouse CD80 mAb

Catalog No.: A26801

## Basic Information

### Observed MW

### Calculated MW

34kDa

### Category

Primary antibody

### Applications

FC

### Cross-Reactivity

Mouse

### CloneNo number

ACC0012-ABf488

### Conjugate

ABflo® 488. Ex:491nm. Em:516nm.

## Recommended Dilutions

FC 5 µl per 10<sup>6</sup> cells in  
100 µl volume

## Background

Predicted to enable coreceptor activity. Acts upstream of or within T cell costimulation; cellular response to lipopolysaccharide; and positive regulation of alpha-beta T cell proliferation. Located in external side of plasma membrane. Is expressed in heart ventricle and skin. Human ortholog(s) of this gene implicated in type 1 diabetes mellitus. Orthologous to human CD80 (CD80 molecule).

## Immunogen Information

### Gene ID

12519

### Swiss Prot

Q00609


### Immunogen

Recombinant fusion protein containing a sequence corresponding to amino acids 38-245 of Mouse CD80.

### Synonyms

B71; Ly53; TSA1; Cd28l; Ly-53; MIC17

## Contact

 | 400-999-6126

 | [cn.market@abclonal.com.cn](mailto:cn.market@abclonal.com.cn)

 | [www.abclonal.com.cn](http://www.abclonal.com.cn)

## Product Information

### Source

Armenian Hamster

### Isotype

IgG

### Purification

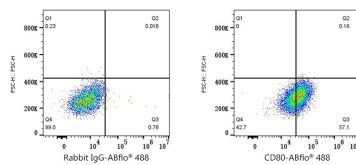
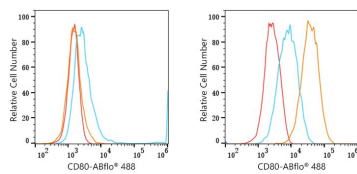
Affinity purification

### Storage

Store at 2-8°C. Avoid freeze.

Buffer: PBS with 0.09% Sodium azide, 0.2% BSA, pH7.3.

## Validation Data



Flow cytometry:  $1 \times 10^6$  P815 cells (negative control, left) and C2C12 cells (right) were surface-stained with ABflo® 488 anti-Mouse CD80 mAb (A26801, 5  $\mu$ l/Test, orange line) or ABflo® 488 Rabbit IgG isotype control (A22069, 5  $\mu$ l/Test, blue line). Non-fluorescently stained cells were used as blank control (red line).

Flow cytometry:  $1 \times 10^6$  C2C12 cells were surface-stained with ABflo® 488 Rabbit IgG isotype control (A22069, 5  $\mu$ l/Test, left) or ABflo® 488 anti-Mouse CD80 mAb (A26801, 5  $\mu$ l/Test, right).