

ABflo® 488 Rabbit anti-Human IgA1 mAb

Catalog No.: A26803

Basic Information

Observed MW

Calculated MW

38kDa/42KDa

Category

Primary antibody

Applications

FC

Cross-Reactivity

Human

CloneNo number

ARC60394-ABflo488

Conjugate

ABflo® 488. Ex:491nm. Em:516nm.

Recommended Dilutions

FC 5 µl per 10⁶ cells in
100 µl volume

Background

Ig alpha is the major immunoglobulin class in body secretions. It may serve both to defend against local infection and to prevent access of foreign antigens to the general immunologic system. In normal adult serum, the approximate percentage composition of IgA with respect to its subclasses is IgA1:90% and IgA2:10%. In secretory IgA, the subclass proportions may approach 50:50. The clinical significance of the subclasses has yet to be determined.

Immunogen Information

Gene ID

3493

Swiss Prot

P01876

Immunogen

Recombinant fusion protein containing a sequence corresponding to amino acids 99-353 of human IgA1.

Synonyms

IgA1

Contact

☎ | 400-999-6126

✉ | cn.market@abclonal.com.cn

🌐 | www.abclonal.com.cn

Product Information

Source

Rabbit

Isotype

IgG

Purification

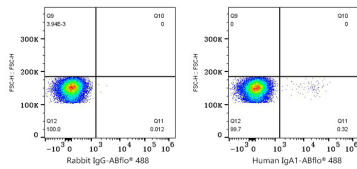
Affinity purification

Storage

Store at 2-8°C. Avoid freeze.

Buffer: PBS with 0.09% Sodium azide, 0.2% BSA, pH7.3.

Validation Data



Flow cytometry: 1X10⁶ Human PBMC were surface-stained with ABflo® 488 Rabbit IgG isotype control (A22069,5 µl/Test,left) or ABflo® 488 Rabbit anti-Human IgA1 mAb (A26803,5 µl/Test,right). Cells in the Lymphocytes gate were used for analysis.