

# ABflo® 647 Rabbit anti-Human IgA1 mAb

Catalog No.: A26804

## Basic Information

### Observed MW

### Calculated MW

38kDa/42KDa

### Category

Primary antibody

### Applications

FC

### Cross-Reactivity

Human

### CloneNo number

ARC60394-ABflo647

### Conjugate

ABflo® 647. Ex:648nm. Em:664nm.

## Recommended Dilutions

FC 5 µl per 10<sup>6</sup> cells in  
100 µl volume

## Background

Ig alpha is the major immunoglobulin class in body secretions. It may serve both to defend against local infection and to prevent access of foreign antigens to the general immunologic system. In normal adult serum, the approximate percentage composition of IgA with respect to its subclasses is IgA1:90% and IgA2:10%. In secretory IgA, the subclass proportions may approach 50:50. The clinical significance of the subclasses has yet to be determined.

## Immunogen Information

### Gene ID

3493

### Swiss Prot

P01876

### Immunogen

Recombinant fusion protein containing a sequence corresponding to amino acids 99-353 of human IgA1.

### Synonyms

IgA1

## Contact

☎ | 400-999-6126

✉ | [cn.market@abclonal.com.cn](mailto:cn.market@abclonal.com.cn)

🌐 | [www.abclonal.com.cn](http://www.abclonal.com.cn)

## Product Information

### Source

Rabbit

### Isotype

IgG

### Purification

Affinity purification

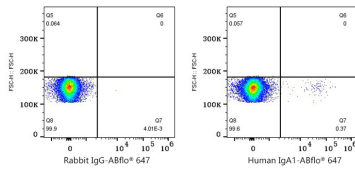
### Storage

Store at 2-8°C. Avoid freeze.

Buffer: PBS with 0.09% Sodium azide, 0.2% BSA, pH7.3.

## Validation Data

---



Flow cytometry:  $1 \times 10^6$  Human PBMC were surface-stained with ABflo® 647 Rabbit IgG isotype control (A22070, 5  $\mu$ l/Test, left) or ABflo® 647 Rabbit anti-Human IgA1 mAb (A26804, 5  $\mu$ l/Test, right). Cells in the Lymphocytes gate were used for analysis.