

ABflo® 610 Rabbit anti-Human HER2/ErbB2 mAb

Catalog No.: A26812

Basic Information

Observed MW

Calculated MW
138kDa

Category
Primary antibody

Applications
FC

Cross-Reactivity
Human

CloneNo number
ARC5137-ABf610

Conjugate
ABflo® 610. Ex:421nm. Em:612nm.

Recommended Dilutions

FC 5 µl per 10⁶ cells in
100 µl volume

Background

This gene encodes a member of the epidermal growth factor (EGF) receptor family of receptor tyrosine kinases. This protein has no ligand binding domain of its own and therefore cannot bind growth factors. However, it does bind tightly to other ligand-bound EGF receptor family members to form a heterodimer, stabilizing ligand binding and enhancing kinase-mediated activation of downstream signalling pathways, such as those involving mitogen-activated protein kinase and phosphatidylinositol-3 kinase. Allelic variations at amino acid positions 654 and 655 of isoform a (positions 624 and 625 of isoform b) have been reported, with the most common allele, Ile654/Ile655, shown here. Amplification and/or overexpression of this gene has been reported in numerous cancers, including breast and ovarian tumors. Alternative splicing results in several additional transcript variants, some encoding different isoforms and others that have not been fully characterized.

Immunogen Information

Gene ID	Swiss Prot
2064	P04626

Immunogen

Recombinant fusion protein containing a sequence corresponding to amino acids 23-652 of human HER2/ErbB2 (NP_004439.2)

Synonyms

NEU; NGL; HER2; TKR1; CD340; HER-2; VSCN2; MLN 19; MLN-19; c-ERB2; c-ERB-2; HER-2/neu; p185(erbB2)

Contact

☎ | 400-999-6126

✉ | cn.market@abclonal.com.cn

🌐 | www.abclonal.com.cn

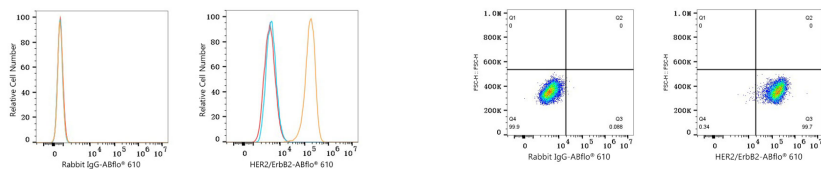
Product Information

Source	Isotype	Purification
Rabbit	IgG	Affinity purification

Storage

Store at 2-8°C. Avoid freeze.
Buffer: PBS with 0.09% Sodium azide, 0.2% BSA, pH7.3.

Validation Data



Flow cytometry: 1×10^6 HL-60 cells (negative control, left) and SK-BR-3 cells (right) were surface-stained with ABflo® 610 Rabbit anti-Human HER2/ErbB2 mAb (A26812, 5 μ l/Test, orange line) or ABflo® 610 Rabbit IgG isotype control (A25826, 5 μ l/Test, blue line). Non-fluorescently stained cells were used as blank control (red line).

Flow cytometry: 1×10^6 SK-BR-3 cells were surface-stained with ABflo® 610 Rabbit IgG isotype control (A25826, 5 μ l/Test, left) or ABflo® 610 Rabbit anti-Human HER2/ErbB2 mAb (A26812, 5 μ l/Test, right).