

# ABflo® 700 Rabbit anti-Mouse CD90.2 mAb

Catalog No.: A26817

## Basic Information

### Observed MW

### Calculated MW

18kDa

### Category

Primary antibody

### Applications

FC

### Cross-Reactivity

Mouse

### CloneNo number

ARC5143-01

### Conjugate

ABflo® 700. Ex:690nm. Em:713nm.

## Recommended Dilutions

FC 5 µl per 10<sup>6</sup> cells in  
100 µl volume

## Background

This gene encodes a glycoprotein that is anchored to the cell surface of thymocytes, neuronal and other cells through a glycosyl-phosphatidylinositol moiety. A soluble form of the encoded protein has also been detected in serum and cerebrospinal fluid. The encoded protein undergoes further processing to generate the mature protein which mediates cell-cell interactions to trigger downstream signaling pathways.

## Immunogen Information

### Gene ID

21838

### Swiss Prot

P01831

### Immunogen

Recombinant protein (or fragment). This information is considered to be commercially sensitive.

### Synonyms

T25; CD90; Thy-1; Thy1.1; Thy1.2; Thy-1.2

## Contact

☎ | 400-999-6126

✉ | [cn.market@abclonal.com.cn](mailto:cn.market@abclonal.com.cn)

🌐 | [www.abclonal.com.cn](http://www.abclonal.com.cn)

## Product Information

### Source

Rabbit

### Isotype

IgG

### Purification

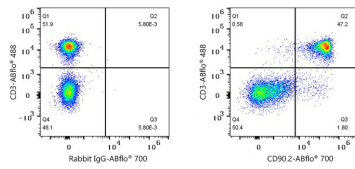
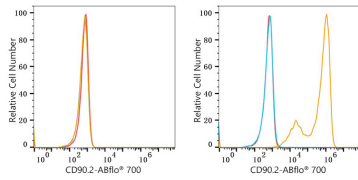
Affinity purification

### Storage

Store at 2-8°C. Avoid freeze.

Buffer: PBS with 0.09% Sodium azide, 0.2% BSA, pH7.3.

## Validation Data



Flow cytometry: 1X10<sup>6</sup> 293T-90.1 (Transfection,left) cells and 293T-90.2 (Transfection,right) cells were surface-stained with ABflo® 700 Rabbit anti-Mouse CD90.2 mAb (A26817,5 µl/Test,orange line) or ABflo® 700 Rabbit IgG isotype control (A25976,5 µl/Test,blue line). Non-fluorescently stained cells were used as blank control (red line).

Flow cytometry: 1X10<sup>6</sup> C57BL/6 mouse splenocytes were surface-stained with ABflo® 488 Rat anti-Mouse CD3 mAb (A27161,5µL,left) and ABflo® 700 Rabbit IgG isotype control (A25976,5 µl/Test,left) or ABflo® 700 Rabbit anti-Mouse CD90.2 mAb (A26817,5 µl/Test,right). Cells in the Lymphocyte gate were used for analysis.