

# PE/Cyanine7 Rabbit anti-Human CD33 mAb

Catalog No.: A26826

## Basic Information

### Observed MW

### Calculated MW

40kDa

### Category

Primary antibody

### Applications

FC

### Cross-Reactivity

Human

### CloneNo number

ARC57861-PE-Cy7

### Conjugate

PE-Cy7. Ex:565nm. Em:778nm.

## Background

Enables protein phosphatase binding activity and sialic acid binding activity. Involved in several processes, including negative regulation of cytokine production; negative regulation of monocyte activation; and positive regulation of protein tyrosine phosphatase activity. Located in several cellular components, including Golgi apparatus; external side of plasma membrane; and peroxisome.

## Recommended Dilutions

FC 5  $\mu$ l per  $10^6$  cells in  
100  $\mu$ l volume

## Immunogen Information

### Gene ID

945

### Swiss Prot

P20138

### Immunogen

Recombinant fusion protein containing a sequence corresponding to amino acids 18-259 of human CD33(NP\_001763.3)

### Synonyms

p67; SIGLEC3; SIGLEC-3

## Contact

 | 400-999-6126

 | [cn.market@abclonal.com.cn](mailto:cn.market@abclonal.com.cn)

 | [www.abclonal.com.cn](http://www.abclonal.com.cn)

## Product Information

### Source

Rabbit

### Isotype

IgG

### Purification

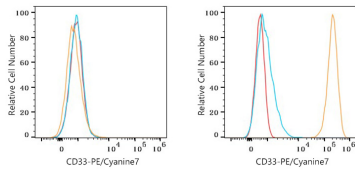
Affinity purification

### Storage

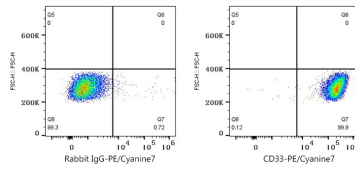
Store at 2-8°C. Avoid freeze.

Buffer: PBS with 0.09% Sodium azide,0.2% BSA,pH7.3.

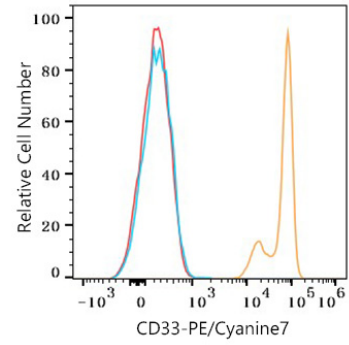
## Validation Data



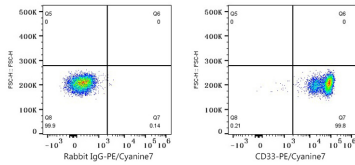
Flow cytometry:  $1 \times 10^6$  MCF7 cells (negative control, left) and THP-1 cells (right) were surface-stained with PE/Cyanine7 Rabbit anti-Human CD33 mAb (A26826, 5  $\mu$ l/Test, orange line) or PE/Cyanine7 Rabbit IgG isotype control (5  $\mu$ l/Test, blue line). Non-fluorescently stained cells were used as blank control (red line).



Flow cytometry:  $1 \times 10^6$  THP-1 cells were surface-stained with PE Rabbit IgG isotype control (5  $\mu$ l/Test, left) or PE/Cyanine7 Rabbit anti-Human CD33 mAb (A26826, 5  $\mu$ l/Test, right).



Flow cytometry:  $1 \times 10^6$  Human PBMC were surface-stained with PE/Cyanine7 Rabbit anti-Human CD33 mAb (A26826, 5  $\mu$ l/Test, orange line) or PE/Cyanine7 Rabbit IgG isotype control (5  $\mu$ l/Test, blue line). Non-fluorescently stained cells were used as blank control (red line).



Flow cytometry:  $1 \times 10^6$  Human PBMC were surface-stained with PE/Cyanine7 Rabbit IgG isotype control (5  $\mu$ l/Test, left) or PE/Cyanine7 Rabbit anti-Human CD33 mAb (A26826, 5  $\mu$ l/Test, right).