

FITC Rabbit anti-Human CD2 mAb

Catalog No.: A26830

Basic Information

Observed MW

Refer to figures

Calculated MW

39kDa

Category

Primary antibody

Applications

FC

Cross-Reactivity

Human

CloneNo number

ARC59333-FITC

Conjugate

FITC. Ex:491nm. Em:516nm.

Recommended Dilutions

FC 5 μ l per 10^6 cells in
100 μ l volume

Background

The protein encoded by this gene is a surface antigen found on all peripheral blood T-cells. The encoded protein interacts with LFA3 (CD58) on antigen presenting cells to optimize immune recognition. A locus control region (LCR) has been found in the 3' flanking sequence of this gene.

Immunogen Information

Gene ID

914

Swiss Prot

P06729

Immunogen

Recombinant fusion protein containing a sequence corresponding to amino acids 25-209 of human CD2 (NP_001758.2).


Synonyms

T11; SRBC; LFA-2

Contact

 | 400-999-6126

 | cn.market@abclonal.com.cn

 | www.abclonal.com.cn

Product Information

Source

Rabbit

Isotype

IgG

Purification

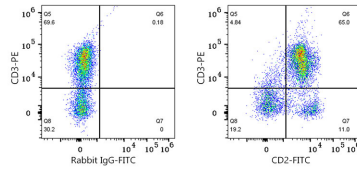
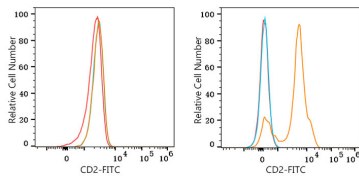
Affinity purification

Storage

Store at 2-8°C. Avoid freeze.

Buffer: PBS with 0.09% Sodium azide, 0.2% BSA, pH7.3.

Validation Data



Flow cytometry: 1×10^6 K-562 cells (negative control, left) and Human PBMC (right) were surface-stained with FITC Rabbit anti-Human CD2 mAb (A26830, 5 μ l/Test, orange line) or FITC Rabbit IgG isotype control (A25616, 5 μ l/Test, blue line). Non-fluorescently stained cells were used as blank control (red line).

Flow cytometry: 1×10^6 Human PBMC were surface-stained with PE Mouse anti-Human CD3 mAb (A25083, 5 μ l/Test) and FITC Rabbit IgG isotype control (A25616, 5 μ l/Test, left) or FITC Rabbit anti-Human CD2 mAb (A26830, 5 μ l/Test, right).