

FITC Rabbit anti-Human CD7 mAb

Catalog No.: A26834

Basic Information

Observed MW

Refer to figures

Calculated MW

25kDa

Category

Primary antibody

Applications

FC

Cross-Reactivity

Human

CloneNo number

ARC54668-FITC

Conjugate

FITC. Ex:491nm. Em:516nm.

Recommended Dilutions

FC 5 μ l per 10^6 cells in
100 μ l volume

Background

This gene encodes a transmembrane protein which is a member of the immunoglobulin superfamily. This protein is found on thymocytes and mature T cells. It plays an essential role in T-cell interactions and also in T-cell/B-cell interaction during early lymphoid development.

Immunogen Information

Gene ID

924

Swiss Prot

P09564

Immunogen

Recombinant fusion protein containing a sequence corresponding to amino acids 26-180 of human CD7 (NP_006128.1).

Synonyms

GP40; TP41; Tp40; LEU-9

Contact

☎ | 400-999-6126

✉ | cn.market@abclonal.com.cn

🌐 | www.abclonal.com.cn

Product Information

Source

Rabbit

Isotype

IgG

Purification

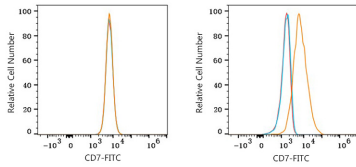
Affinity purification

Storage

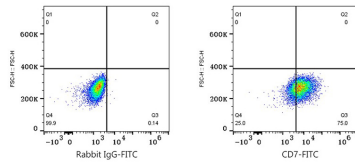
Store at 2-8°C. Avoid freeze.

Buffer: PBS with 0.09% Sodium azide, 0.2% BSA, pH7.3.

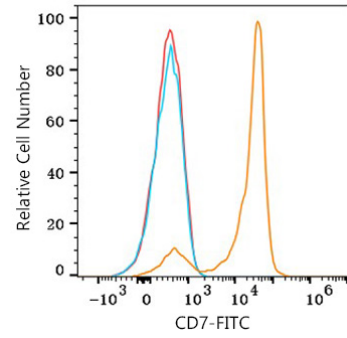
Validation Data



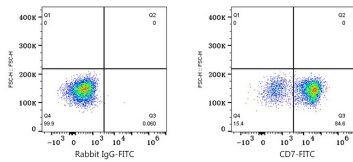
Flow cytometry: 1×10^6 A549 cells (negative control, left) and MOLT-4 cells (right) were surface-stained with FITC Rabbit anti-Human CD7 mAb (A26834, 5 μ l/Test, orange line) or FITC Rabbit IgG isotype control (A25616, 5 μ l/Test, blue line). Non-fluorescently stained cells were used as blank control (red line).



Flow cytometry: 1×10^6 MOLT-4 cells were surface-stained with FITC Rabbit IgG isotype control (A25616, 5 μ l/Test, left) or FITC Rabbit anti-Human CD7 mAb (A26834, 5 μ l/Test, right).



Flow cytometry: 1×10^6 Human PBMC were surface-stained with FITC Rabbit anti-Human CD7 mAb (A26834, 5 μ l/Test, orange line) or FITC Rabbit IgG isotype control (A25616, 5 μ l/Test, blue line). Non-fluorescently stained cells were used as blank control (red line).



Flow cytometry: 1×10^6 Human PBMC were surface-stained with FITC Rabbit IgG isotype control (A25616, 5 μ l/Test, left) or FITC Rabbit anti-Human CD7 mAb (A26834, 5 μ l/Test, right). Cells in the Monocytes gate were used for analysis.